

INSTRUCTION MANUAL

INDUSTRIAL BLENDER - TI15-160001 D2

* Please read these instructions carefully before operation this appliance.

IMPORTANT SAFEGUARDS

When using electrical appliances, basics safety precautions should always be observed including the following:

- Before connecting your blender check if voltage of your power system corresponds to the same specified on the appliance.
- To protect against risk of electrical shock, do not put cord, plug, base or motor in water or other liquids.
- Never connect two or more appliances in the same plug.
- When not in use, unplug the blender.
- Avoid starting blender empty.
- Avoid contact with moving parts because blades are sharp. "Handle carefully".
- Keep hands and utensils out of container while blending to prevent the Possibility of severe personal injury and or damage to blender. A plastic spatula may be used but must be used only when blender is "NOT RUNNING".
- Only remove the container when blender "COMPLETELY STOPPED".

INSTRUCTIONS FOR USE

- Blender control is made by switch (ON - OFF)
- It is recommended to cut food in small pieces and maintain food below frieze height to avoid spilling.
- To start blender, place small quantity of food before connecting it, and afterwards complete container placing food through service lid.
- When blender is running do not remove the lid.
- If blender action stops, turn blender off. Remove lid and use a plastic spatula to push mixture toward blades. Replace lid and continue.

CLEANING PROCEDURE

- Clean container (cup) with liquid soap and water filling to half capacity.
- Turn on blender for some seconds.
- Turn off blender, empty the container and rinse it.
- Unplug blender clean body and external cup with a wet cloth.
- Do not use harsh detergent or chemical products for cleaning.
- Never use water jet or immerse appliance in water.
- Wipe off appliance switch a dry doth and wait at least half an hour before re-connecting to the main power outlet.

The pictures/drawings are illustrations. All data can be changed without notification.

CROYDON



TI15

CROYDON

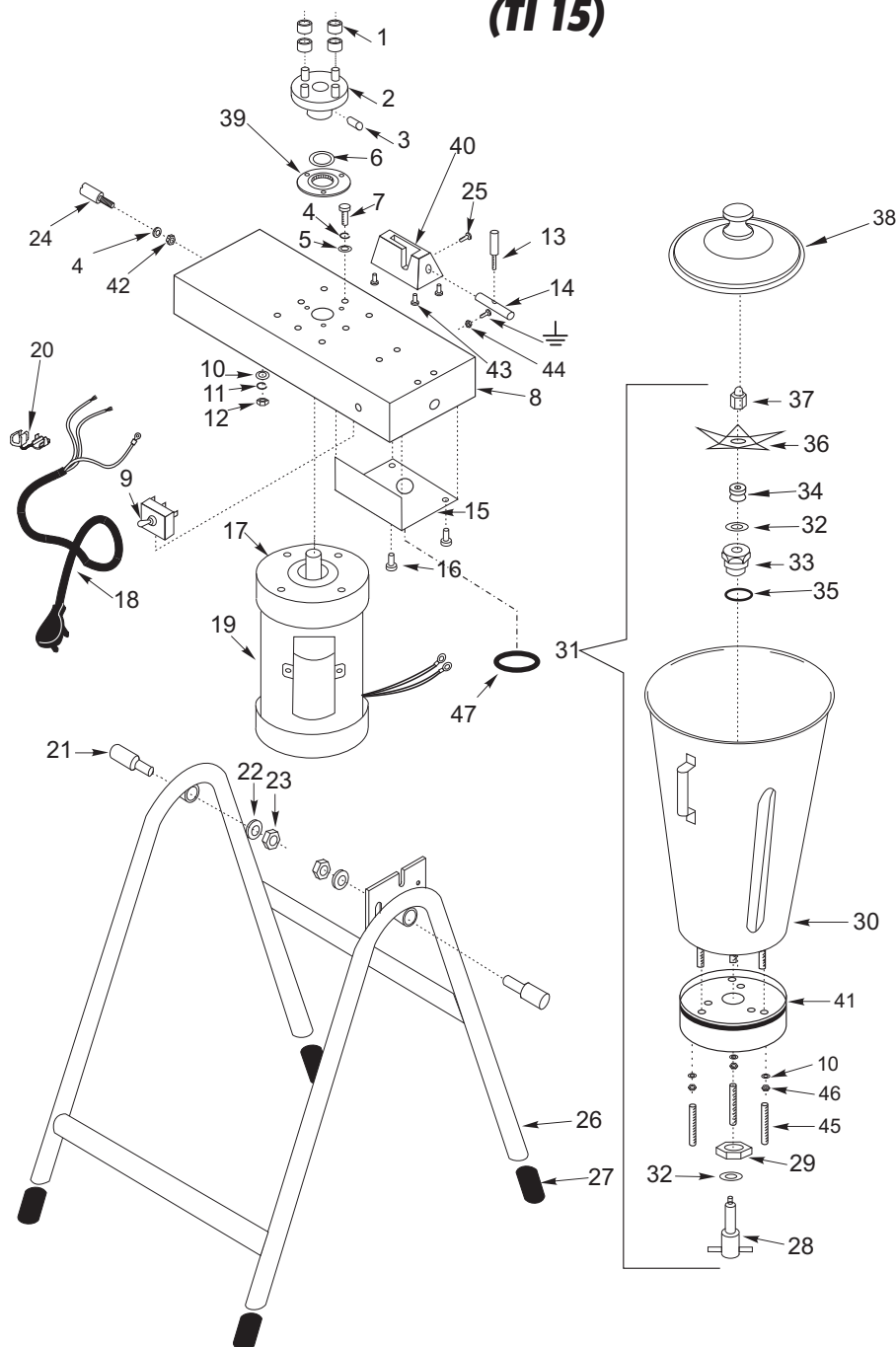
CROYDONMAQ INDUSTRIAL LTDA.

Estrada São Lourenço, 891 - Capivari
Duque de Caxias - RJ / Brasil - CEP 25243-150
Phone: 55 21 2777- 8100 / 55 21 2777-8106
e-mail: croydon@croydon.com.br

TI15-160001 D2

CROYDON

INDUSTRIAL BLENDER 15 LITERS (TI 15)

**CROYDON**

INDUSTRIAL BLENDER 15 LITERS (TI 15)

| item | code | description |
|------|----------|--------------------------|
| 1 | 37.023-3 | Polyurethane ring |
| 2 | 37.044-3 | Shaft Adapter |
| 3 | 534 | Allen Screw 1/4" |
| 4 | 598 | Press Washer |
| 5 | 641 | Washer |
| 6 | 9.410-3 | Retainer |
| 7 | 361 | Screw 5/16" |
| 8 | 37.229-3 | Base |
| 9 | 260 | Switch |
| 10 | 642 | Washer |
| 11 | 597 | Press Washer |
| 12 | 601 | Nut 1/4" |
| 13 | 37.919-3 | Latch Din |
| 14 | 37.920-3 | Latch Body |
| 15 | 37.233-3 | Electrical Protector Lid |
| 16 | 552 | Screw 2,9 |
| 17 | 37.209-3 | Motor Protector Plate |
| 18 | 2.096-3 | Cord Connection |
| 19 | 37.284-3 | Motor (1,5 HP) |
| 20 | 9.413-3 | Cord Retainer |
| 21 | 37.206-3 | Special Screw |
| 22 | 592 | Press Washer |
| 23 | 607 | Nut 1/2" |
| 24 | 37.235-3 | Rabbet |
| 25 | 385 | Screw 3/16" |
| 26 | 37.901-3 | Blender Support |
| 27 | 37.015-3 | Foot |
| 28 | 37.079-3 | Shaft |
| 29 | 37.058-3 | Chuck Nut |
| 30 | 37.258-3 | Container |
| 31 | 37.580-3 | Container assembly |
| 32 | 37.511-3 | Underfriction Washer |
| 33 | 37.083-3 | Bushing (Chuck) |
| 34 | 37.063-3 | Retainer |
| 35 | 37.062-3 | O'ring |
| 36 | 37.570-3 | Knife |
| 37 | 37.033-3 | Nut |
| 38 | 37.019-3 | Lid |
| 39 | 37.232-3 | Container's Support |
| 40 | 37.234-3 | Latch Support |
| 41 | 37.256-3 | Base |
| 42 | 610 | Nut 5/16" |
| 43 | 332 | screw 1/4" |
| 44 | 604 | Nut 3/16" |
| 45 | 574 | Stud 1/4" |
| 46 | 635 | Nut |
| 47 | 2.007-3 | Eyelet |

Technical Data

| TI15-160001 D2 | |
|-----------------------------|------------------------------|
| Voltage (V) | 110 (60 Hz) |
| Power (HP) | 1 ½ |
| Amperage (A) | 18.0 |
| Speed (rpm) | 3430 |
| Capacity (l) | 15 |
| Weight (Kg/lbs) | 24/52.8 |
| Dimension W x H x D (cm/in) | 46/18.2 x 119/46.9 x 57/22.5 |