

INSTRUCTION MANUAL

FOOD PROCESSOR – MODEL: PAC6-16145-701

ATTENTION:

- **PLEASE** read these instructions carefully before operating this appliance and retain this manual for future reference .
- Before connecting your equipment check if voltage of your power system corresponds to the same specified on the appliance. The wrong connection voids the warranty.
- Never connect, simultaneously, more than one electric equipment to a same power outlet.
- When not in use, unplug the appliance.

SAFETY

- This equipment works using moving parts and sharp blades. IT IS STRONGLY RECOMMENDED TO OPERATE OBSERVING ALL SAFETY PRECAUTIONS.
- Maintenance, cleaning or any other service, should only be done by trained personnel and with the machine disconnected from electric power source.

The following instructions should be observed to avoid accidents:

- 1) Disconnect the machine from electric power source when needed to remove any moving part, cleaning, maintenance or any other kind of service.
- 2) Never use any tool that is not a part of the equipment to help in the operation.
- 3) Never use water jet directly on the equipment.
- 4) Before start operation, check if the processing disc and the chamber are correctly positioned and well fixed.
- 5) Never use clothes with wide sleeves, mainly in the wrists, during the operation.
- 6) Never introduce fingers or any other object instead of the original rammer in the equipment feed opening.
- 7) Never introduce the fingers or any other object in the lower outlet opening. Keep always hands away from the moving parts.
- 8) Never connect the equipment with hands, shoes or clothes wet.

PRE-OPERATION

IMPORTANT: Unplug the equipment. Remove the chamber cover by loosening two screws on the top and turning the cover clockwise. Chose the disc to use, place it on the main axle and check if it is very well fit to avoid damage to the disc and chamber.

OPERATION

IMPORTANT: Unplug the equipment whenever you wish to change the disc. Wait the disc completely stops, before remove the chamber cover. To remove the disc, turn it counterclockwise and pull it up.

- To feed the processor, remove the rammer, introduce the product to be processed in the feed opening and push it down using the rammer. For small size products as carrots and similar use the small rammer and adapter.

CLEANING

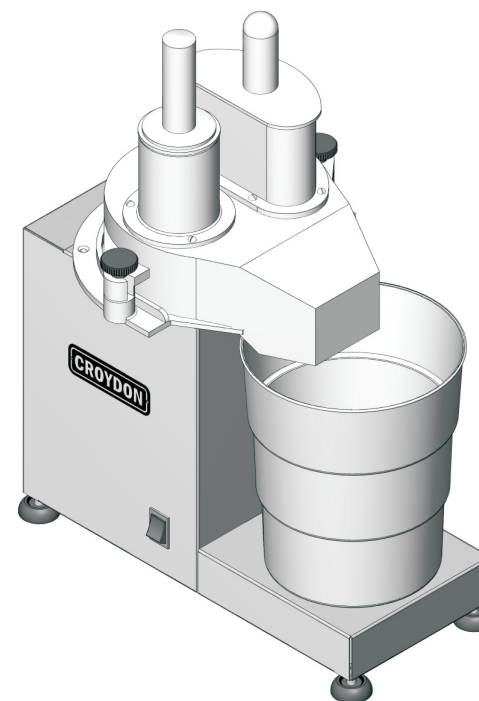
- Always ensure that the appliance is disconnected from the main power supply before cleaning.
- For daily cleaning, use a damp cloth with water and neutral soap, avoiding excess.

CONSERVATION

- Verify the motor, the belt and the moving parts, when any different noise appears.
- Periodically check tension of the belt and replace the set, in case wasting off.
- **WHEN VERIFYING BELT TENSION, UNPLUG THE APPLIANCE.**
- Keep your equipment always clean and ready to use, this will help your equipment to last longer.

The pictures/drawings are illustrations. All data can be changed without notification.

CROYDON



PAC6

CROYDON

CROYDONMAQ INDUSTRIAL LTDA.

Estrada São Lourenço, 891 - Capivari

Duque de Caxias - RJ / Brasil - CEP 25243-150

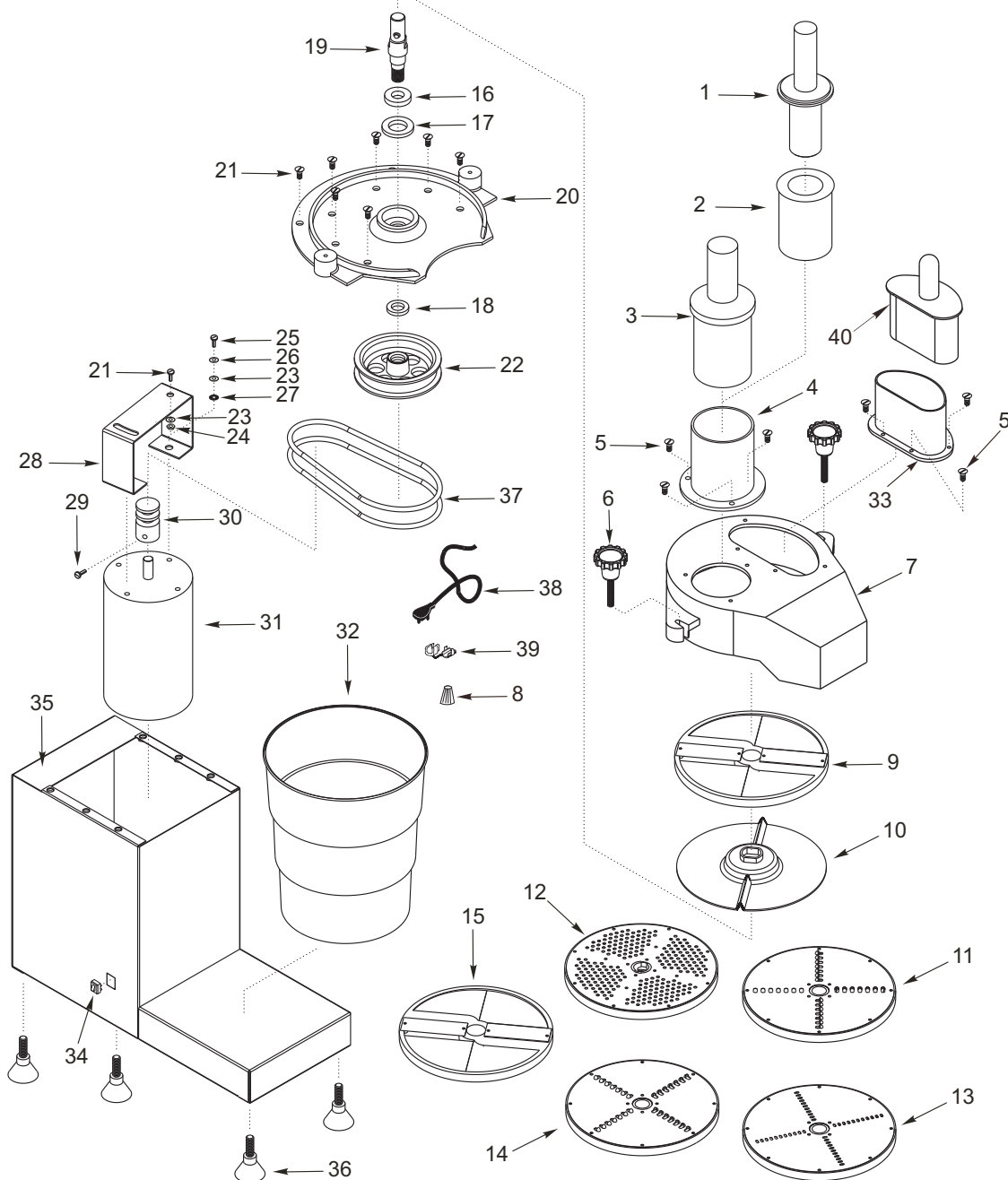
Phone: 55 21 2777- 8100 / Fax:55 21 2777-8106

e-mail: croydon@croydon.com.br - www.croydon.com.br

PAC6-16145-701



FOOD PROCESSOR (PAC6)



FOOD PROCESSOR (PAC6)

| Item | Code | Description |
|------|----------|-----------------------|
| 1 | 2.607-3 | Small Rammer |
| 2 | 2.537-3 | Adapter |
| 3 | 2.606-3 | Large Rammer |
| 4 | 2.561-3 | Feed Opening |
| 5 | 385 | Screw 3/16" X 3/8" |
| 6 | 2.109-3 | Cover Screw |
| 7 | 2.564-3 | Chamber Cover |
| 8 | 2.085-3 | Wire Connector |
| 9 | 2.573-4 | Slicing disc 3mm |
| 10 | 3.001-3 | Extraction Disc |
| 11 | 2.575-4 | Fraying Disc 8mm |
| 12 | 2.574-4 | Grater Disc |
| 13 | 2.605-4 | Fraying Disc 3mm |
| 14 | 2.576-4 | Fraying Disc 5mm |
| 15 | 2.600-4 | Slicing Disc 1mm |
| 16 | 3.006-3 | Retainer |
| 17 | 9.456-3 | Bearing |
| 18 | 9.473-3 | Bearing |
| 19 | 2.569-3 | Shaft |
| 20 | 2.565-3 | Chamber Base |
| 21 | 200-3 | Screw 1/4" X 5/8" |
| 22 | 2.572-3 | Pulley |
| 23 | 641 | Washer 5/16" |
| 24 | 601 | Nut (1/4") |
| 25 | 345 | Screw (1/4" X 3/4") |
| 26 | 593 | Press Washer (3/8") |
| 27 | 4.072-3 | Washer |
| 28 | 90.972-3 | Motor support |
| 29 | 534 | Screw (1/4" X 1/2") |
| 30 | 2.571-3 | Pulley |
| 31 | 3.002-3 | Motor 1/2CV |
| 32 | 2.563-3 | Container |
| 33 | 2.678-3 | D Shape Opening |
| 34 | 37.366-3 | On/Off Switch |
| 35 | 2.577-3 | Body |
| 36 | 2.088-3 | Foot |
| 37 | 9.518-3 | Belt |
| 38 | 14.033-3 | Power Cord Connection |
| 39 | 9.413-3 | Cord Retainer |
| 40 | 2.676-3 | D Shape Rammer |

Technical Data

PAC6-16145-701

| | |
|------------------------------|-----------------------------|
| Voltage (V) | 110 (60 Hz) |
| Power (W) | 360 |
| Amperage (A) | 8.4 |
| Weight (kg/lbs) | 17/37.4 |
| Dimensions W x H x D (cm/in) | 46/18.2 x 49/19.3 x 30/11.9 |

Wiring Diagram

