

INSTRUCTION MANUAL

BEVERAGE COOLER MODEL: RSDP-160001 A1

- Please read these instructions carefully before operating this appliance.
- Check if local voltage corresponds to the unit label.

SAFETY

- This appliance is designed to operate on alternative current (A.C.) Only
- DO NOT CONNECT TO DIRECT CURRENT (D.C.).
- Care should be taken when operating this appliance, as HOT SURFACES may cause burns.
- DO NOT SHAKE OR TURN UPSIDE DOWN because it can damage the refrigeration system.
- When not in use for long period unplug the appliance.

OPERATION

- Install the equipment on a counter 50" (1.2m) height (at least).
- Find a place well ventilated, protected from solar rays and away from heat sources.
- Plug the equipment without the product container and turn on. After some minutes you will see a thin ice layer on the evaporator (drawing nº 15) that will melt a short time later and this cycle will repeat.
- Replace the product container and the equipment is ready to use.
- As a "tip" fill in the product container with a already cooled product to get a best performance.
- Obs.: The temperature is controlled by a thermostat that keeps the liquid around 41°F (5°C).

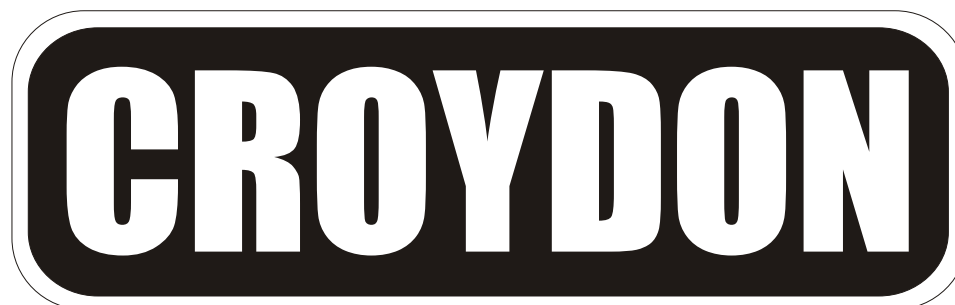
CLEANING

- For your safety unplug the equipment before any maintenance service.
- Body: Use only a damp cloth or sponge dipped in soapy water.
- Product Container: Use only water and neutral soap. Avoid abrasive materials.
- Product Dispenser: Use only water and neutral soap after disassemble (see drawing nº 35 and 36).



CROYDONMAQ INDUSTRIAL LTDA.

Estrada São Lourenço, 891 - Capivari - Duque de Caxias.
RJ - Brasil - CEP 25243-150 Fax: 55 21 2676-2522
Phone: 55 21 2776-1928 / 55 21 2676-1512
e-mail: croydon@croydon.com.br

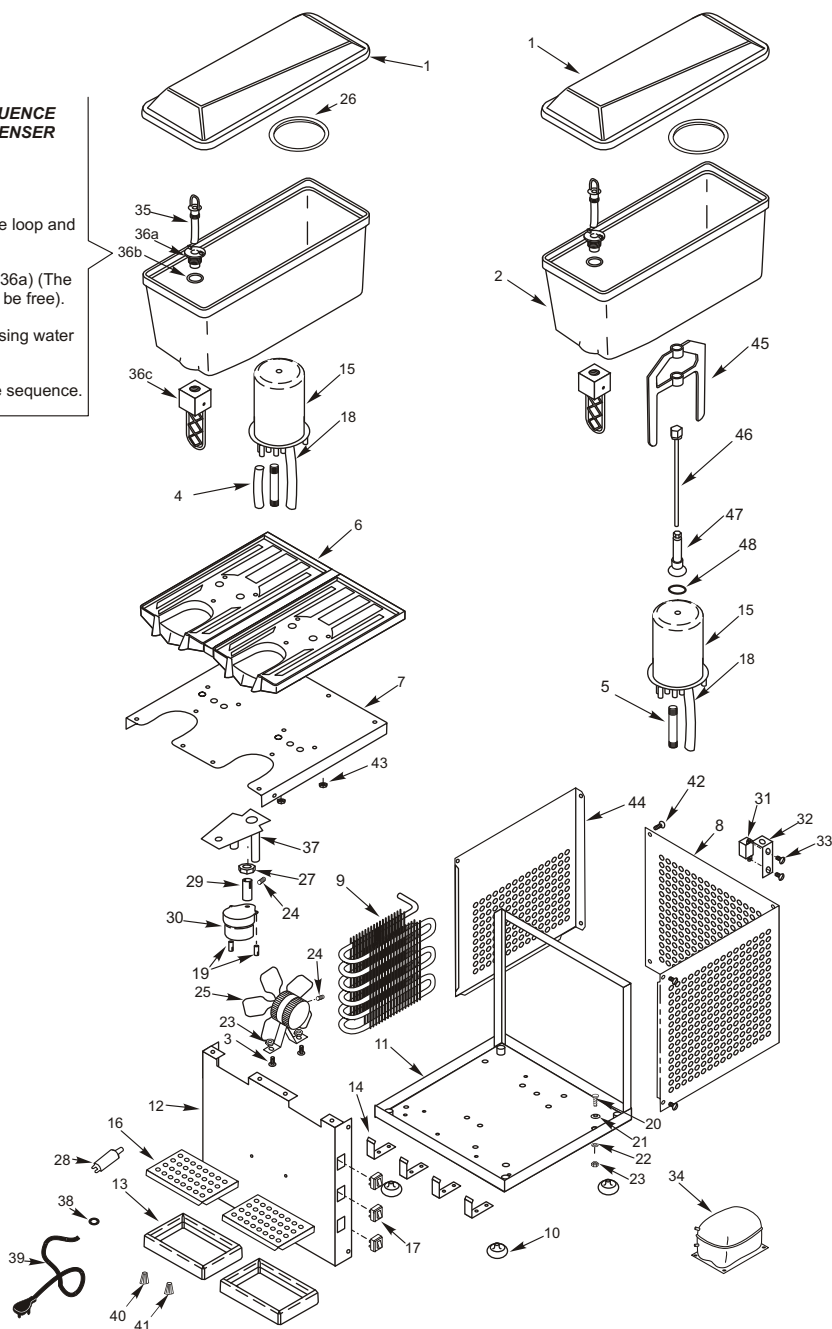


CROYDON

DOUBLE BEVERAGE COOLER (RSDP)

DISASSEMBLY SEQUENCE TO WASH THE DISPENSER

- Push the lever (36c).
- Hold the Tube (35) by the loop and pull it.
- Unscrew the plastic Nut(36a) (The dispenser body (36c) will be free).
- Wash the components using water and neutral detergent.
- Reassembly it in reverse sequence.



CROYDON

DOUBLE BEVERAGE COOLER (RSDP)

Item	Code	Description
1	1.108-3	Product Container Cover
2	1.183-3	Product Container
3	332	Screw (1/4")
4	1.206-3	Insulation Tube
5	1.187-3	Plastic Tube w/ thread
6	1.437-3	Product Container Seat
7	1.189-3	Seat's Base
8	1.172-3	Cabinet Cover
9	1.427-3	Condenser
10	2.088-3	Rubber Foot
11	1.188-3	Cabinet
12	1.192-3	Front Panel
13	1.174-3	Drip Pan
14	1.232-3	Drip Pan Support
15	1.163-3	Evaporator
16	1.166-3	Drip Pan Grate
17	271	On/Off Switch
18	1.109-3	Insulation Tube
19	1.175-3	Geared Motor Screw
20	333	Screw (1/4")
21	597	Lock Washer (1/4")
22	642	Washer (1/4")
23	601	Nut (1/4")
24	531	Screw Hex Type
25	1.426-3	Fan Motor Assembly
26	1.185-3	Latex Ring
27	1.262-3	Nut (1/2")
28	1.204-3	Gás Filter R-134a
29	1.179-3	Geared Motor Adapter
30	1.164-3	Geared Motor
31	1.270-3	Thermostat
32	1.410-3	Thermostat Support
33	331	Screw
34	1.466-3	Compressor
35	1.474-3	Dispenser Tube
36	1.469-3	Dispenser Assembly (Complete)
37	1.181-3	Geared Motor Support
38	3.021-3	Rubber Protection
39	14.033-3	Power Connection Cord
40	2.191-3	Wiring Conector
41	2.190-3	Wiring Conector
42	481	Screw (3/16")
43	635	Nut (M6)
44	1.171-3	Left Cover
45	1.186-3	Peel
46	1.184-3	Rotor's Rotor
47	1.256-3	Rotor's Tube
48	508	O'ring

Technical Data

RSDP-160001 A1	
Power (W)	300
Amperage (A)	2.7 (110V60Hz)
Capacity (L/gl)	15 x 2 / 4.0 x 2
Weight (Kg/lbs)	24.1 / 53
Dimension WxHxD (cm/in)	41/16.2x 65/25.6 x 52/20.5