

INSTRUCTION MANUAL

INDUSTRIAL BLENDER - TI4AL-260001 W6

IMPORTANT SAFEGUARDS

When using electrical appliances, basics safety precautions should always be observed including the following:

- Before connecting your blender check if voltage of your power system corresponds to the same specified on the appliance.
- To protect against risk of electrical shock, do not put cord, plug, base or motor in water or other liquids.
- Never connect two or more appliances in the same plug.
- When not in use, unplug the blender.
- Avoid starting blender
- Avoid contact with moving parts because blades are sharp. "Handle carefully".
- Keep hands and utensils out of container while blending to prevent the possibility of severe personal injury and or damage to blender. A plastic spatula may be used but must be used only when blender is "NOT RUNNING".
- Only remove the container when blender "COMPLETELY STOPPED".

INSTRUCTIONS FOR USE

- Blender control is made by two buttons: * White bottom (on/off)
* Red bottom (pulse)
- It is recommended to cut food in small pieces and maintain food below frieze height to avoid spilling.
- To start blender, place small quantity of food before connecting it, and afterwards complete container placing food through service lid.
- For mixed dry ingredient use the pulse bottom first.
- When blender is running do not remove the lid.
- If blender action stops, turn blender off. Remove lid and use a plastic spatula to push mixture toward blades. Replace lid and continue.

CLEANING PROCEDURE

- Clean container (cup) with liquid soap and water filling to half capacity.
- Turn on blender for some seconds.
- Turn off blender, empty the container and rinse it.
- Unplug blender clean body and external cup with a wet cloth.
- Do not use harsh detergent or chemical products for cleaning.
- To disassemble see Fig1

CROYDON



TI4AL

CROYDON

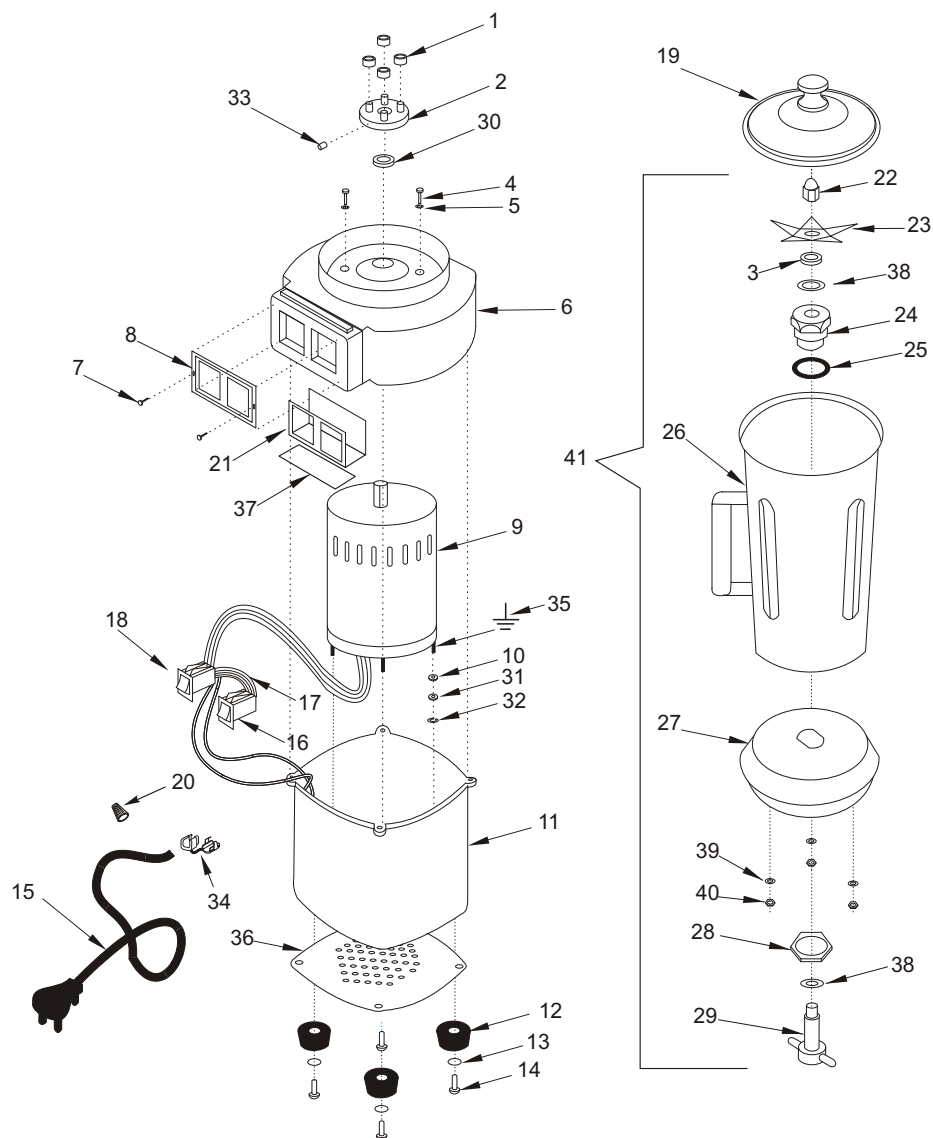
CROYDONMAQ INDUSTRIAL LTDA.

Estrada São Lourenço, 891 - Capivari - Duque de Caxias.
RJ - Brasil - CEP 25243-150 Fax: 55 21 2676-2522
Phone: 55 21 2776-1928 / 55 21 2676-1512
e-mail: croydon@croydon.com.br

TI4AL-160001 W6



INDUSTRIAL BLENDER 4 LITERS

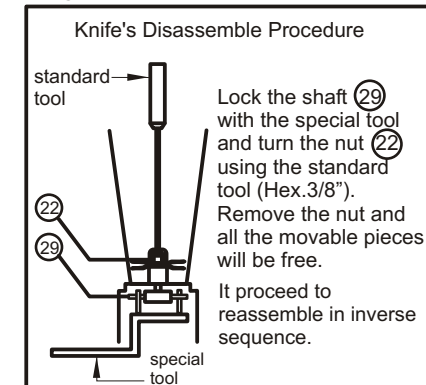


INDUSTRIAL BLENDER 4 LITERS

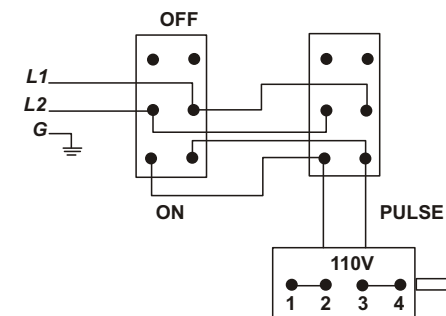
| item | code | description |
|------|----------|------------------------|
| 1 | 37.023-3 | Polyurethane Ring |
| 2 | 37.044-3 | Shaft Adapter |
| 3 | 37.063-3 | Retainer |
| 4 | 343 | (1/4) Screw |
| 5 | 589 | Washer |
| 6 | 37.043-3 | Body Cover |
| 7 | 552 | Screw |
| 8 | 37.025-3 | Switches' Plate |
| 9 | 37.311-3 | 60 HZ Motor |
| 10 | 641 | Washer |
| 11 | 37.042-3 | Body |
| 12 | 3.000-3 | Rubber Foot |
| 13 | 647 | Washer |
| 14 | 680 | Rivet |
| 15 | 2.082-3 | Cord Connection |
| 16 | 260 | Switch (on/off) |
| 17 | 37.191-3 | Wire Connection |
| 18 | 259 | Switch (pulse) |
| 19 | 37.014-3 | Lid |
| 20 | 2.085-3 | Wiring Connector |
| 21 | 37.084-3 | Insulator |
| 22 | 37.033-3 | Knife's Nut (Hex-3/8") |
| 23 | 37.570-3 | Knife |
| 24 | 37.083-3 | Bushings (Chuck) |
| 25 | 37.062-3 | Rubber Ring |
| 26 | 37.052-3 | Container (4l) |
| 27 | 37.078-3 | Container's Base |
| 28 | 37.058-3 | Chuck Nut |
| 29 | 37.079-3 | Shaft |
| 30 | 9.410-3 | Retainer |
| 31 | 643 | Washer |
| 32 | 594 | Washer |
| 33 | 575 | Screw |
| 34 | 9.413-3 | Cord Retainer |
| 35 | ----- | Screw Ground |
| 36 | 37.004-3 | Bottom Cover Plate |
| 37 | 37.007-3 | Protection Plate |
| 38 | 37.511-3 | Underfriction Washer |
| 39 | 635 | Screw |
| 40 | 642 | Washer |
| 41 | 37.574-3 | Container Assembly |

description

FIG1



Wiring Diagram



Technical Data

| TI4AL-160001 W6 | |
|-------------------------|---------------------------|
| Voltage (V) | 110/60 Hz |
| Power (HP) | 1/2 |
| Amperage (A) | 7 |
| Speed (rpm) | 3465 |
| Capacity (l) | 4 |
| Weight (Kg/lbs) | 16/35.2 |
| Dimension WxHxD (cm/in) | 22/8.7 x 62/24.5 x 24/9.5 |