

INSTRUCTION MANUAL

INDUSTRIAL BLENDER - TI4AL-160001 B0

IMPORTANT SAFEGUARDS

When using electrical appliances, basics safety precautions should always be observed including the following:

- Before connecting your blender check if voltage of your power system corresponds to the same specified on the appliance.
- To protect against risk of electrical shock, do not put cord, plug, base or motor in water or other liquids.
- Never connect two or more appliances in the same plug.
- When not in use, unplug the blender.
- Avoid starting blender
- Avoid contact with moving parts because blades are sharp. "Handle carefully".
- Keep hands and utensils out of container while blending to prevent the possibility of severe personal injury and or damage to blender. A plastic spatula may be used but must be used only when blender is "NOT RUNNING".
- Only remove the container when blender "COMPLETELY STOPPED".

INSTRUCTIONS FOR USE

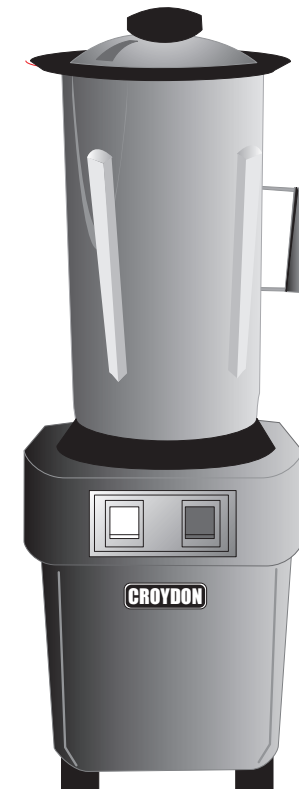
- Blender control is made by two buttons: * White button (on/off)
* Red button (pulse)
- It is recommended to cut food in small pieces and maintain food below frieze height to avoid spilling.
- To start blender place small quantity of food before connecting it, and afterwards complete container placing food through service lid.
- For mixed dry ingredient use the pulse button first.
- When blender is running do not remove the lid.
- If blender action stops, turn blender off. Remove lid and use a plastic spatula to push mixture toward blades. Replace lid and continue.

CLEANING PROCEDURE

- Clean container (cup) with liquid soap and water filling to half capacity.
- Turn on blender for some seconds.
- Turn off blender, empty the container and rinse it.
- Unplug blender clean body and external cup with a wet cloth.
- Do not use harsh detergent or chemical products for cleaning.
- To disassemble see Fig1

The pictures/drawings are illustrations. All data can be changed without notification.

CROYDON



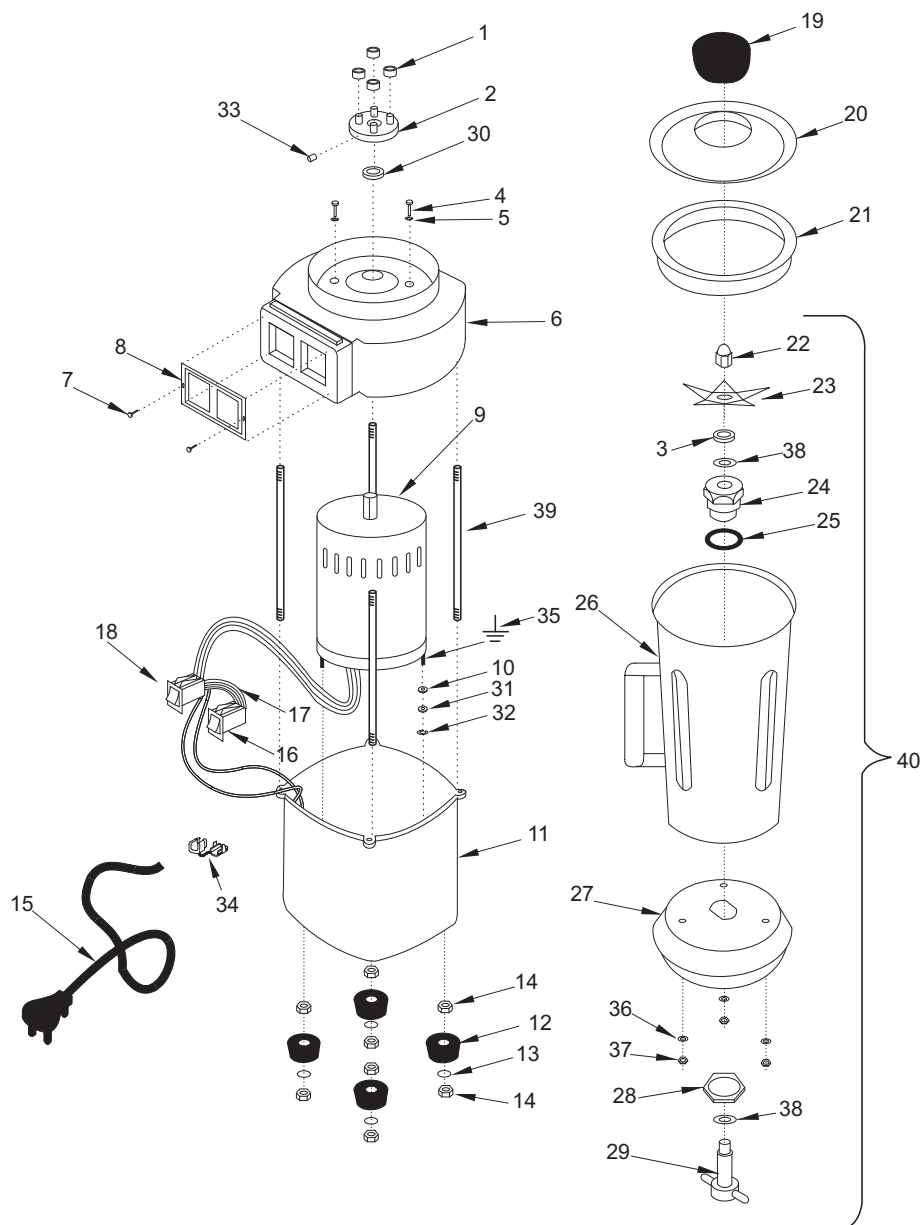
CROYDON

CROYDONMAQ INDUSTRIAL LTDA.

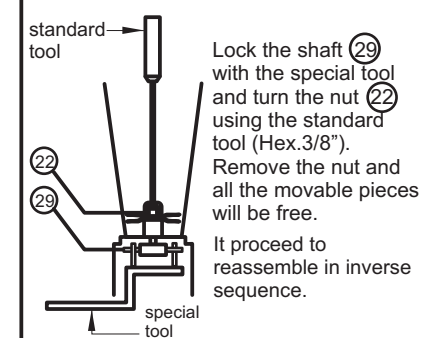
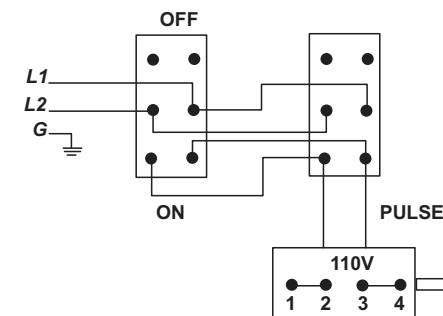
Estrada São Lourenço, 891 - Capivari
Duque de Caxias - RJ / Brasil - CEP 25243-150
Phone: 55 21 2777- 8100 / 55 21 2777-8106
e-mail: croydon@croydon.com.br - www.croydon.com.br

TI4AL

TI4AL-160001 B0

CROYDON**INDUSTRIAL BLENDER 4 LITERS****CROYDON****INDUSTRIAL BLENDER 4 LITERS**

item	code	description
1	37.023-3	Polyurethane Ring
2	37.044-3	Shaft Adapter Retainer
3	37.063-3	(1/4) Screw
4	343	Washer
5	589	Screw
6	37.043-3	Body Cover
7	552	Switches' Plate
8	37.025-3	60 HZ Motor
9	37.312-3	Washer
10	37.042-3	Body
11	3.000-3	Rubber Foot
12	647	Washer
13	604	Nut
14	14.033-3	Cord Connection
15	37.041-3	Switch (on/off)
16	37.091-3	Wire Connection
17	37.072-3	Switch (pulse)
18	37.031-3	Service Lid
19	37.051-3	Lid (4l/6l)
20	37.707-3	Lid Seal (4l/6l)
21	37.033-3	Knife's Nut (Hex-3/8")
22	37.570-3	Knife
23	37.154-3	Bushings (Chuck)
24	37.062-3	Rubber Ring
25	37.052-3	Container (4l)
26	37.078-3	Container's Base
27	37.058-3	Chuck Nut
28	37.079-3	Shaft
29	9.410-3	Retainer
30	643	Washer
31	594	Washer
32	534	Screw
33	9.413-3	Cord Retainer
34	-----	Screw Ground
35	642	Washer
36	635	Nut
37	37.511-3	Underfriction Washer
38	37.243-3	Thread Bar
39	37.574-3	Pitcher Assembly
40		

FIG1**Knife's Disassemble Procedure****Wiring Diagram****Technical Data**

TI4AL-160001 B0	
Voltage (V)	110
Power (HP)	1/2
Amperage (A)	8.8
Speed (rpm)	3430
Capacity (l)	4
Weight (Kg/lbs)	16/35.2
Dimension WxHxD (cm/in)	22/8.7 x 62/24.5 x 24/9.5