

INSTRUCTION MANUAL

INDUSTRIAL BLENDER - TI8AL-160001 B1

IMPORTANT SAFEGUARDS

When using electrical appliances, basics safety precautions should always be observed including the following:

- Before connecting your blender check if voltage of your power system corresponds to the same specified on the appliance.
- To protect against risk of electrical shock, do not put cord, plug, base or motor in water or other liquids.
- Never connect two or more appliances in the same plug.
- When not in use, unplug the blender.
- Avoid starting blender
- Avoid contact with moving parts because blades are sharp. "Handle carefully".
- Keep hands and utensils out of container while blending to prevent the possibility of severe personal injury and or damage to blender. A plastic spatula may be used but must be used only when blender is "NOT RUNNING".
- Only remove the container when blender "COMPLETELY STOPPED".

INSTRUCTIONS FOR USE

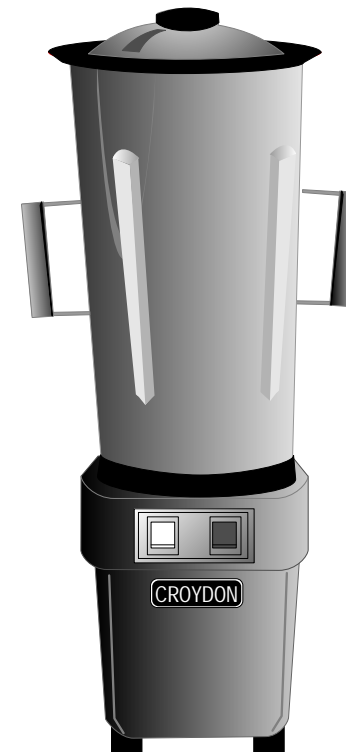
- Blender control is made by two buttons: * White button (on/off)
* Red button (pulse)
- It is recommended to cut food in small pieces and maintain food below frieze height to avoid spilling.
- To start blender, place small quantity of food before connecting it, and afterwards complete container placing food thru service lid.
- For mixed dry ingredient use the pulse button first.
- When blender is running do not remove the lid.
- If blender is running do not remove the lid.
- If blender action stops, turn blender off. Remove lid and use a plastic spatula to push mixture toward blades. Replace lid and continue.

CLEANING PROCEDURE

- Clean container (cup) with liquid soap and water filling to half capacity.
- Turn on blender for some seconds.
- Turn off blender, empty the container and rinse it.
- Unplug blender clean body and external cup with a wet cloth.
- Do not use harsh detergent or chemical products for cleaning.
- To disassemble see Fig1.
- DO NOT WASH THE PITCHER AND THE LID IN DISH WASHER!

The pictures/drawings are illustrations. All data can be changed without notification.

CROYDON



TI8AL

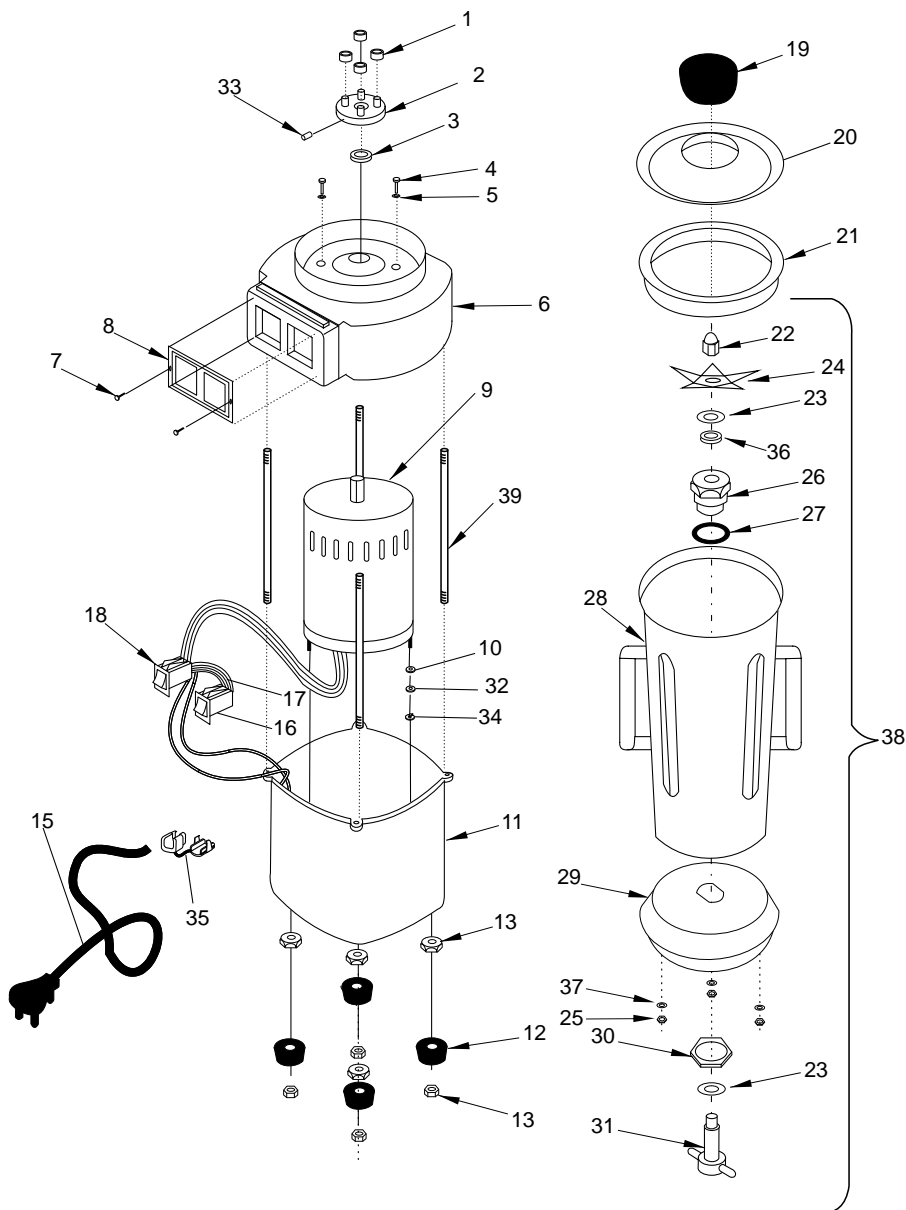
CROYDON

CROYDONMAQ INDUSTRIAL LTDA.

Estrada São Lourenço, 891 - Capivari
Duque de Caxias - RJ / Brasil - CEP 25243-150
Phone: 55 21 2777- 8100 / 55 21 2777-8106
e-mail: croydon@croydon.com.br - www.croydon.com.br

TI8AL-160001 B1

CROYDON INDUSTRIAL BLENDER 8 LITERS

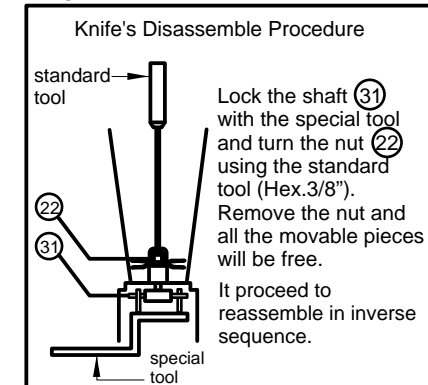


CROYDON

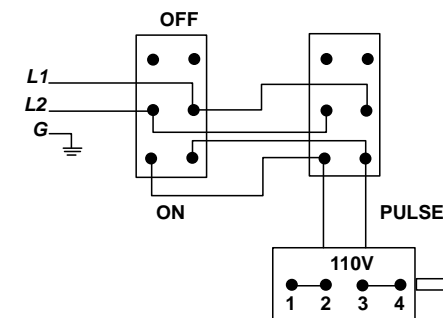
INDUSTRIAL BLENDER 8 LITERS.

| item | code | description |
|------|----------|-------------------|
| 1 | 37.023-3 | Polyurethane Ring |
| 2 | 37.044-3 | Shaft Adapter |
| 3 | 9.410-3 | Retainer |
| 4 | 343 | (1/4) screw |
| 5 | 589 | Washer |
| 6 | 40.101-3 | Body Cover |
| 7 | 552 | (2,9) Screw |
| 8 | 37.025-3 | Switches' Plate |
| 9 | 37.312-3 | 60 HZ Motor |
| 10 | 641 | Washer |
| 11 | 40.077-3 | Body |
| 12 | 3.000-3 | Rubber Foot |
| 13 | 604 | Nut |
| 14 | 665 | Rivet |
| 15 | 14.033-3 | Cord Connection |
| 16 | 37.041-3 | Switch (on/off) |
| 17 | 37.091-3 | Wire Connection |
| 18 | 37.072-3 | Switch (pulse) |
| 19 | 37.031-3 | Service Lid |
| 20 | 37.111-3 | Lid (8l) |
| 21 | 37.103-3 | Seal Lid (8l) |
| 22 | 37.033-3 | Knife's Nut |
| 23 | 37.511-3 | Friction's Washer |
| 24 | 37.570-3 | Knife |
| 25 | 635 | Nut |
| 26 | 37.154-3 | Bushings (chuck) |
| 27 | 37.062-3 | Rubber Ring |
| 28 | 37.115-3 | Pitcher (8l) |
| 29 | 37.078-3 | Container's Base |
| 30 | 37.058-3 | Chuck's Nut |
| 31 | 37.079-3 | Shaft |
| 32 | 643 | Washer |
| 33 | 534 | Screw |
| 34 | 594 | Washer |
| 35 | 9.413-3 | Cord Retainer |
| 36 | 37.063-3 | Retainer |
| 37 | 642 | Washer |
| 38 | 37.578-3 | Pitcher Assembly |
| 39 | 37.243-3 | Thread Bar |

FIG1



Wiring Diagram



Technical Data

| TI8AL-160001 B1 | |
|-------------------------|----------------------------|
| Voltage (V) | 110 (60 Hz) |
| Power (HP) | 1/2 |
| Amperage (A) | 8.8 |
| Speed (rpm) | 3500 |
| Capacity (l) | 8 |
| Weight (Kg/lbs) | 17/37.4 |
| Dimension WxHxD (cm/in) | 32/12.6 x 73/28.8 x 24/9.5 |