

INSTRUCTION MANUAL

FOOD BLENDER - T16SL-160001 C3

IMPORTANT SAFEGUARDS

When using electrical appliances, basics safety precautions should always be observed including the following:

- Before connecting your blender check if voltage of your power system corresponds to the same specified on the appliance.
- To protect against risk of electrical shock, do not put cord, plug, base or motor in water or other liquids.
- Never connect two or more appliances in the same plug.
- When not in use, unplug the blender.
- Avoid contact with moving parts because blades are sharp. "Handle carefully".
- Keep hands and utensils out of container while blending to prevent the possibility of severe personal injury and or damage to blender. A plastic spatula may be used but only when blender is "NOT RUNNING".
- Only remove the container when blender "COMPLETELY STOPPED".

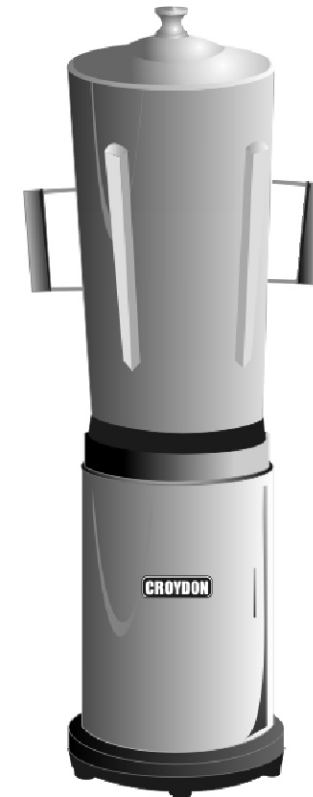
INSTRUCTIONS FOR USE

- It is recommended to cut food in small pieces and maintain food below frieze height to avoid spilling.
- To start blender, place small quantity of food before connecting it, and afterwards complete container placing food through service lid.
- When blender is running do not remove the lid.
- If blender action stops, turn blender off. Remove lid and use a plastic spatula to push mixture toward blades. Replace lid and start blender again.

CLEANING PROCEDURE

- Clean container (cup) with liquid soap and water filling to half capacity.
- Turn on blender for some seconds.
- Turn off blender, empty the container and rinse it.
- Unplug blender clean body and external cup with a wet cloth.
- Do not use harsh detergent or chemical products for cleaning.

CROYDON



T16SL



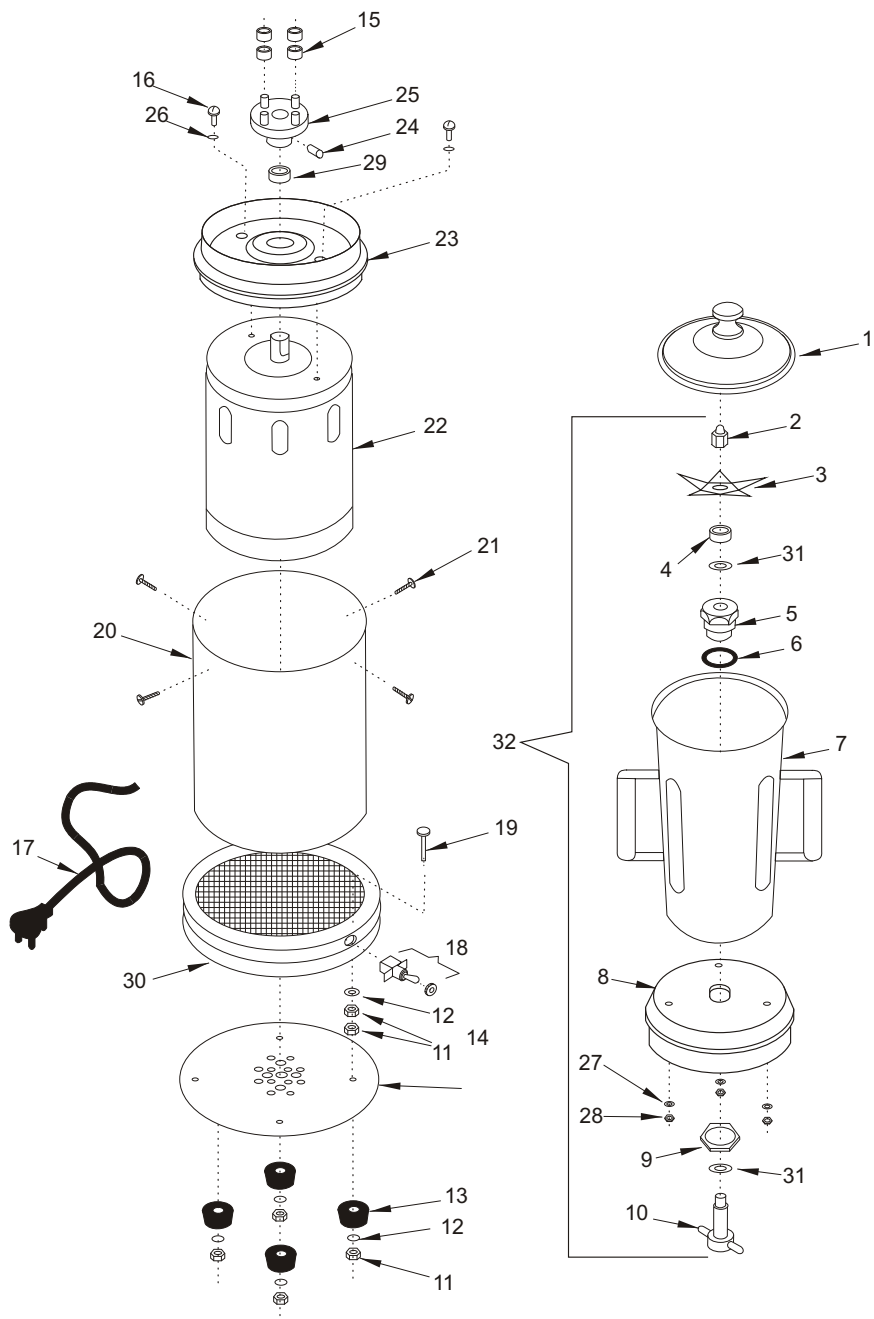
CROYDONMAQ INDUSTRIAL LTDA.

Estrada São Lourenço, 891 - Capivari - Duque de Caxias.
RJ - Brasil - CEP 25243-150 Fax: 55 21 2676-2522
Phone: 55 21 2776-1928 / 55 21 2676-1512
e-mail: croydon@croydon.com.br

T16SL-160001 C3



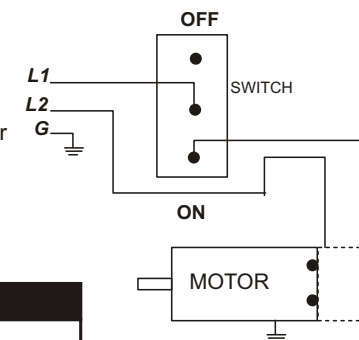
INDUSTRIAL BLENDER 6 LITERS



INDUSTRIAL BLENDER 6 LITERS

Item	code	description
1	37.014-3	Lid
2	37.033-3	Knife's Nut
3	37.570-3	Knife
4	37.063-3	Retainer
5	37.083-3	Bushings (Chuck)
6	37.062-3	Rubber Ring
7	37.320-3	Container (6L)
8	37.078-3	Container's Base
9	37.058-3	Chuck Nut
10	37.079-3	Shaft
11	604	Nut
12	643	Washer
13	3.000-3	Rubber Foot
14	4.063-3	Bottom Cover Plate
15	37.023-3	Polyurethane Ring
16	345	Screw
17	14.033-3	Cord Connection
18	265	Switch (on-off)
19	359	Screw
20	37.302-3	Body
21	552	Screw
22	37.312-3	60HZ Motor
23	37.303-3	Container's Support
24	534	Screw
25	37.044-3	Shaft Adapter
26	597	Washer
27	642	Washer
28	635	Nut
29	9.410-3	Retainer
30	4.044-3	Foot
31	37.511-3	Underfriction Washer
32	37.576-3	Container Assembly

Wiring Diagram



Technical Data

TI6SL-160001 C3	
Voltage (V)	110 (60Hz)
Power (HP)	1 / 2
Amperage (A)	7
Speed (rpm)	3465
Capacity (l)	6
Weight (kg/lbs)	10.4/2.9
Dimension WxHxD (cm/in)	25/9.9 x 73/28.8 x 21/8.3