

INSTRUCTION MANUAL

INDUSTRIAL BLENDER - T18AL-160001 W4

IMPORTANT SAFEGUARDS

When using electrical appliances, basic safety precautions should always be observed including the following:

- Before connecting your blender check if voltage of your power system corresponds to the same specified on the appliance.
- To protect against risk of electrical shock, do not put cord, plug, base or motor in water or other liquids.
- Never connect two or more appliances in the same plug.
- When not in use, unplug the blender.
- Avoid starting blender
- Avoid contact with moving parts because blades are sharp. "Handle carefully".
- Keep hands and utensils out of container while blending to prevent the possibility of severe personal injury and or damage to blender. A plastic spatula may be used but must be used only when blender is "NOT RUNNING".
- Only remove the container when blender "COMPLETELY STOPPED".

INSTRUCTIONS FOR USE

- Blender control is made by two buttons: * White bottom (on/off)
* Red bottom (pulse)
- It is recommended to cut food in small pieces and maintain food below freeze height to avoid spilling.
- To start blender, place small quantity of food before connecting it, and afterwards complete container placing food through service lid.
- For mixed dry ingredient use the pulse bottom first.
- When blender is running do not remove the lid.
- If blender action stops, turn blender off. Remove lid and use a plastic spatula to push mixture toward blades. Replace lid and continue.

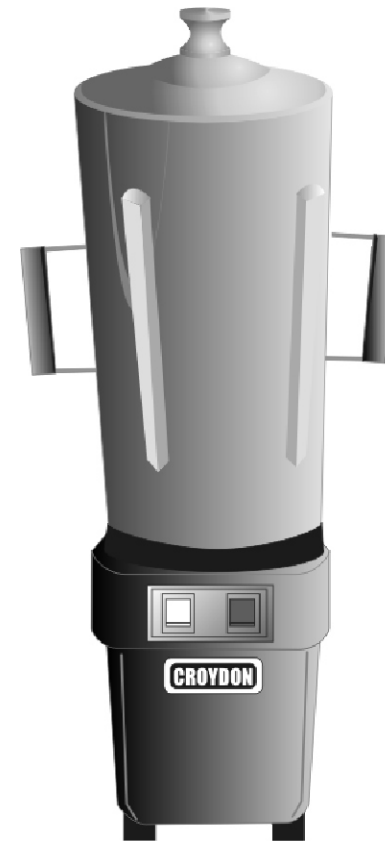
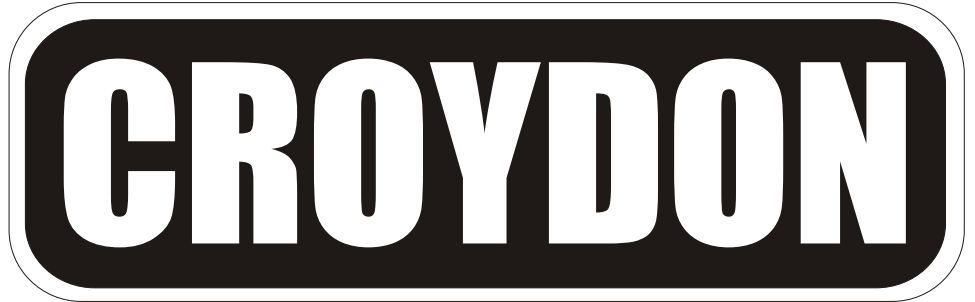
CLEANING PROCEDURE

- Clean container (cup) with liquid soap and water filling to half capacity.
- Turn on blender for some seconds.
- Turn off blender, empty the container and rinse it.
- Unplug blender clean body and external cup with a wet cloth.
- Do not use harsh detergent or chemical products for cleaning.
- To disassemble see Fig1



CROYDONMAQ INDUSTRIAL LTDA.

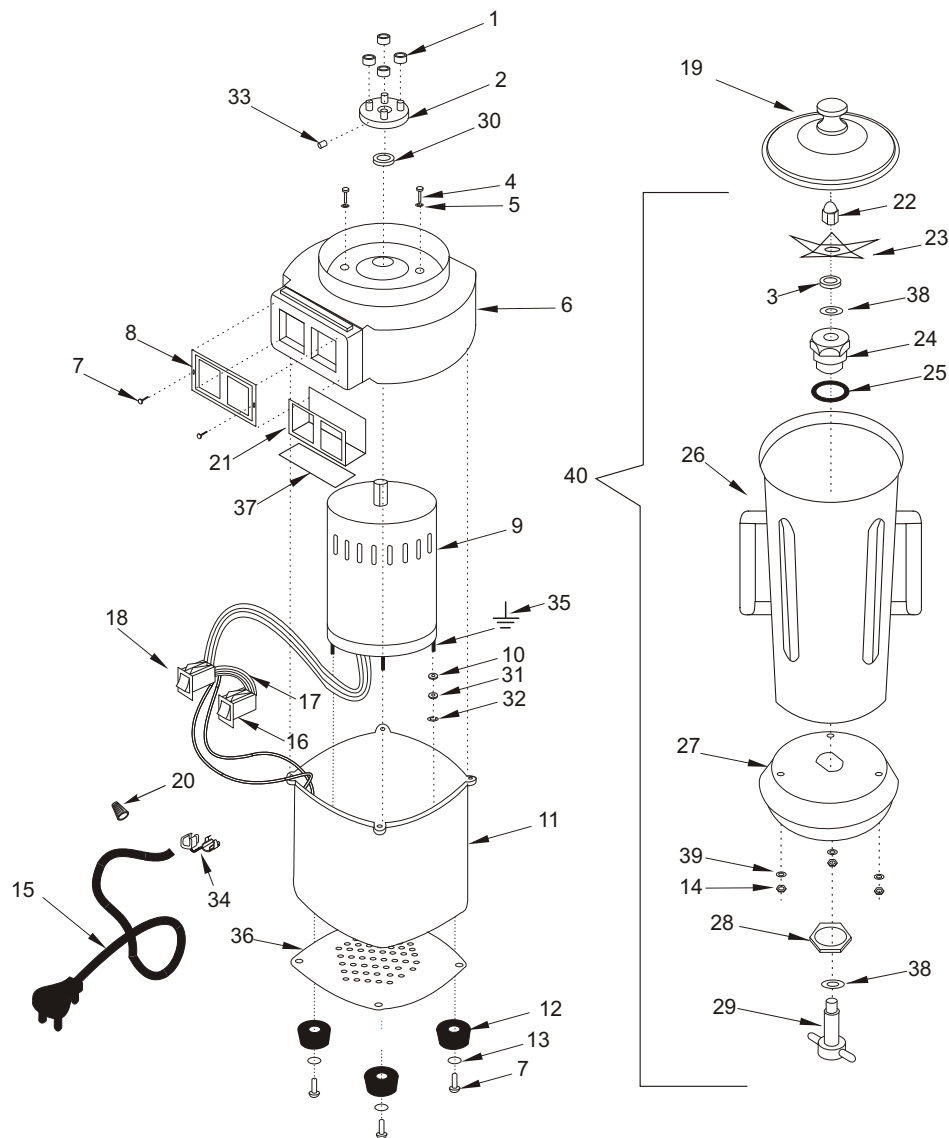
Estrada São Lourenço, 891 - Capivari - Duque de Caxias.
RJ - Brasil - CEP 25243-150 Fax: 55 21 2676-2522
Phone: 55 21 2776-1928 / 55 21 2676-1512
e-mail: croydon@croydon.com.br



T18AL-160001 W4



INDUSTRIAL BLENDER 8 LITERS

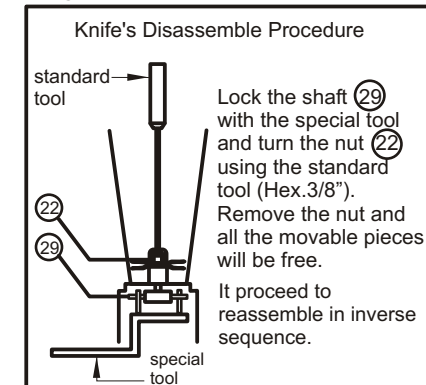


INDUSTRIAL BLENDER 8 LITERS

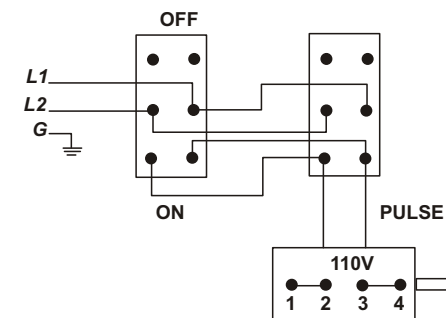
item	code	description
1	37.023-3	Polyurethane Ring
2	37.044-3	Shaft Adapter
3	37.063-3	Retainer
4	343	(1/4) Screw
5	589	Washer
6	37.043-3	Body Cover
7	552	Screw
8	37.025-3	Switches' Plate
9	37.311-3	60 HZ Motor
10	641	Washer
11	37.042-3	Body
12	3.000-3	Rubber Foot
13	647	Washer
14	635	Nut
15	2.082-3	Cord Connection
16	260	Switch (on/off)
17	37.191-3	Wire Connection
18	259	Switch (pulse)
19	37.016-3	Lid
20	2.085-3	Wiring Connector
21	37.084-3	Insulator
22	37.033-3	Knife's Nut (Hex-3/8")
23	37.570-3	Knife
24	37.083-3	Bushings (Chuck)
25	37.062-3	Rubber Ring
26	37.115-3	Container (8l)
27	37.078-3	Container's Base
28	37.058-3	Chuck Nut
29	37.079-3	Shaft
30	9.410-3	Retainer
31	643	Washer
32	594	Washer
33	575	Screw
34	9.413-3	Cord Retainer
35	-----	Screw Ground
36	37.004-3	Bottom Cover Plate
37	37.007-3	Protection Plate
38	37.511-3	Washer
39	642	Washer
40	37.578	Container Assembly

description

FIG1



Wiring Diagram



Technical Data

T18AL-160001 W4	
Voltage (V)	110/60 Hz
Power (HP)	1/2
Amperage (A)	7
Speed (rpm)	3465
Capacity (l)	4
Weight (Kg/lbs)	17/37.4
Dimension WxHxD (cm/in)	32/12.6 x 73/28.8 x 24/9.5