

INSTRUCTION MANUAL

FOOD BLENDER - T18SL-160001 C4

IMPORTANT SAFEGUARDS

When using electrical appliances, basics safety precautions should always be observed including the following:

- Before connecting your blender check if voltage of your power system corresponds to the same specified on the appliance.
- To protect against risk of electrical shock, do not put cord, plug, base or motor in water or other liquids.
- Never connect two or more appliances in the same plug.
- When not in use, unplug the blender.
- Avoid contact with moving parts because blades are sharp. "Handle carefully".
- Keep hands and utensils out of container while blending to prevent the possibility of severe personal injury and or damage to blender. A plastic spatula may be used but only when blender is "NOT RUNNING".
- Only remove the container when blender "COMPLETELY STOPPED".

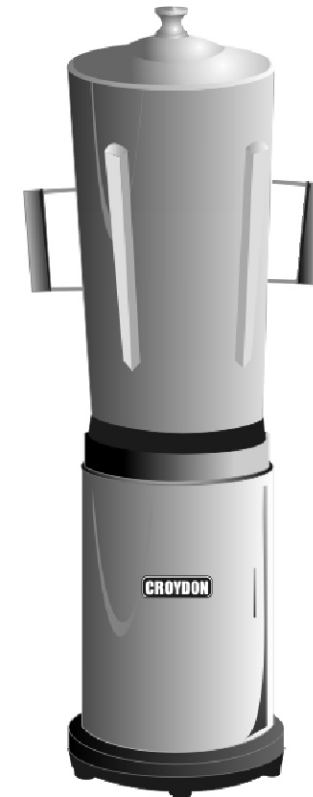
INSTRUCTIONS FOR USE

- It is recommended to cut food in small pieces and maintain food below frieze height to avoid spilling.
- To start blender, place small quantity of food before connecting it, and afterwards complete container placing food through service lid.
- When blender is running do not remove the lid.
- If blender action stops, turn blender off. Remove lid and use a plastic spatula to push mixture toward blades. Replace lid and start blender again.

CLEANING PROCEDURE

- Clean container (cup) with liquid soap and water filling to half capacity.
- Turn on blender for some seconds.
- Turn off blender, empty the container and rinse it.
- Unplug blender clean body and external cup with a wet cloth.
- Do not use harsh detergent or chemical products for cleaning.

CROYDON



T18SL

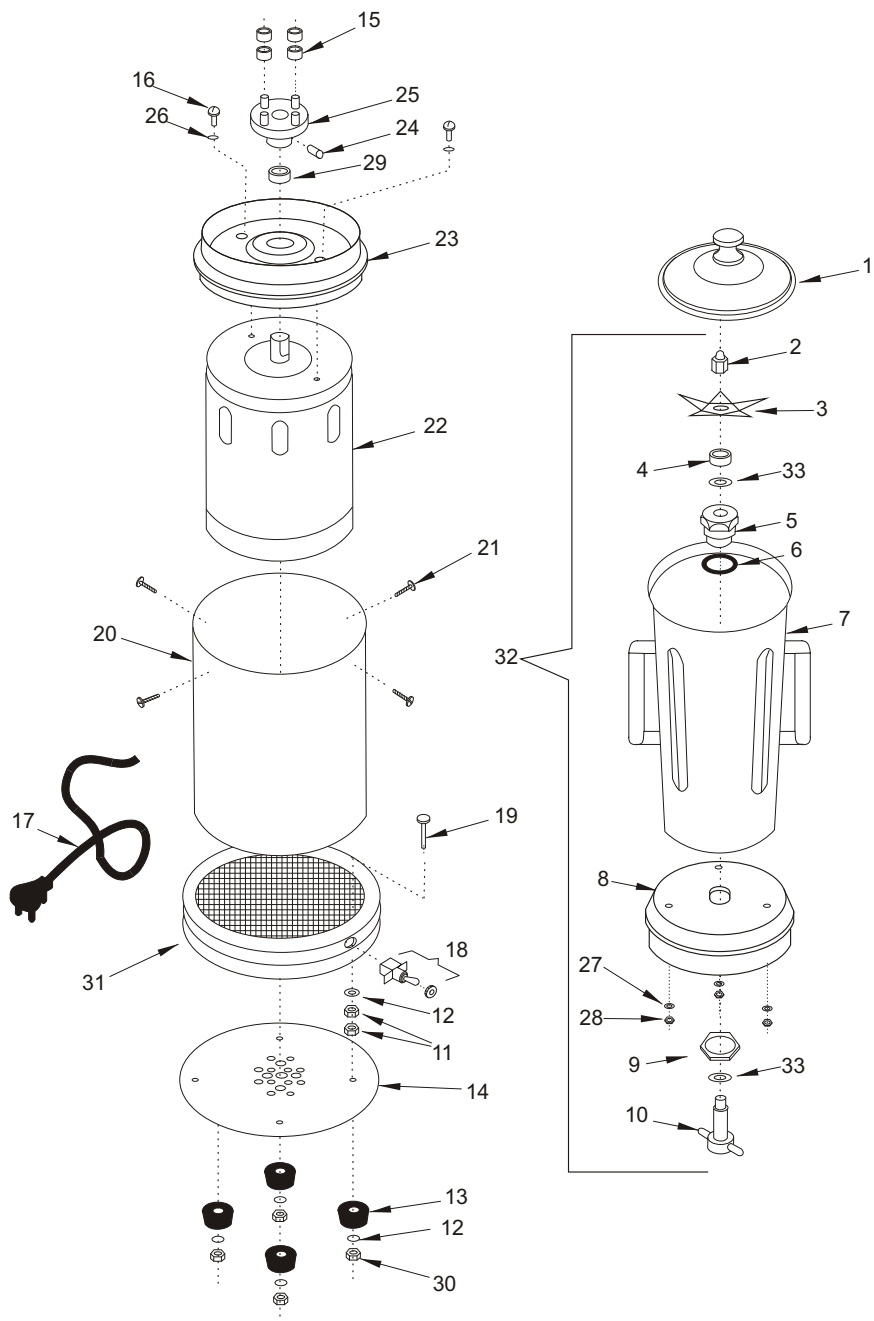
CROYDON

CROYDONMAQ INDUSTRIAL LTDA.

Estrada São Lourenço, 891 - Capivari - Duque de Caxias.
RJ - Brasil - CEP 25243-150 Fax: 55 21 2676-2522
Phone: 55 21 2776-1928 / 55 21 2676-1512
e-mail: croydon@croydon.com.br

T18SL-160001 C4

CROYDON INDUSTRIAL BLENDER 8 LITERS



CROYDON INDUSTRIAL BLENDER 8 LITERS

| Item | code | description |
|------|----------|----------------------|
| 1 | 37.016-3 | Lid |
| 2 | 37.033-3 | Knife's Nut |
| 3 | 37.570-3 | Knife |
| 4 | 37.063-3 | Retainer |
| 5 | 37.083-3 | Bushings (Chuck) |
| 6 | 37.062-3 | Rubber Ring |
| 7 | 37.115-3 | Container (8L) |
| 8 | 37.078-3 | Container's Base |
| 9 | 37.058-3 | Chuck Nut |
| 10 | 37.079-3 | Shaft |
| 11 | 604 | Nut |
| 12 | 643 | Washer |
| 13 | 2.088-3 | Rubber Foot |
| 14 | 4.063-3 | Bottom Cover Plate |
| 15 | 37.023-3 | Polyurethane Ring |
| 16 | 345 | Screw |
| 17 | 14.033-3 | Cord Connection |
| 18 | 265 | Switch (on-off) |
| 19 | 359 | Screw |
| 20 | 37.302-3 | Body |
| 21 | 552 | Screw |
| 22 | 37.312-3 | 60HZ Motor |
| 23 | 37.303-3 | Container's Support |
| 24 | 534 | Screw |
| 25 | 37.044-3 | Shaft Adapter |
| 26 | 597 | Washer |
| 27 | 642 | Washer |
| 28 | 635 | Nut |
| 29 | 9.410-3 | Retainer |
| 30 | 606 | Nut |
| 31 | 4.044-3 | Foot |
| 32 | 37.578-3 | Container Assembly |
| 33 | 37.511-3 | Underfriction Washer |

Technical Data

| TI8SL-160001 C4 | |
|-------------------------|----------------------------|
| Voltage (V) | 110 (60Hz) |
| Power (HP) | 1 / 2 |
| Amperage (A) | 8.8 |
| Speed (rpm) | 3430 |
| Capacity (l) | 8 |
| Weight (kg/lbs) | 11/24.2 |
| Dimension WxHxD (cm/in) | 26/10.3 x 75/29.6 x 21/8.3 |

Wiring Diagram

