

INSTRUCTION MANUAL

FOOD BLENDER - TI8SL-160001 W3

IMPORTANT SAFEGUARDS

When using electrical appliances, basics safety precautions should always be observed including the following:

- Before connecting your blender check if voltage of your power system corresponds to the same specified on the appliance.
- To protect against risk of electrical shock, do not put cord, plug, base or motor in water or other liquids.
- Never connect two or more appliances in the same plug.
- When not in use, unplug the blender.
- Avoid contact with moving parts because blades are sharp. "Handle carefully".
- Keep hands and utensils out of container while blending to prevent the possibility of severe personal injury and or damage to blender. A plastic spatula may be used but only when blender is "NOT RUNNING".
- Only remove the container when blender "COMPLETELY STOPPED".

INSTRUCTIONS FOR USE

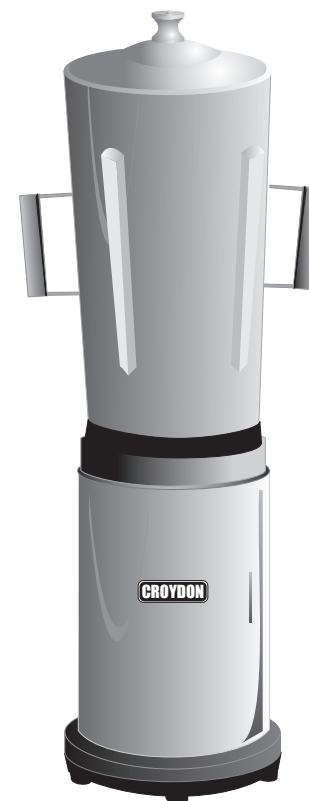
- It is recommended to cut food in small pieces and maintain food below freeze height to avoid spilling.
- To start blender, place small quantity of food before connecting it, and afterwards complete container placing food through service lid.
- When blender is running do not remove the lid.
- If blender action stops, turn blender off. Remove lid and use a plastic spatula to push mixture toward blades. Replace lid and start blender again.

CLEANING PROCEDURE

- Clean container (cup) with liquid soap and water filling to half capacity.
- Turn on blender for some seconds.
- Turn off blender, empty the container and rinse it.
- Unplug blender clean body and external cup with a wet cloth.
- Do not use harsh detergent or chemical products for cleaning.

The pictures/drawings are illustrations. All data can be changed without notification.

CROYDON



TI8SL

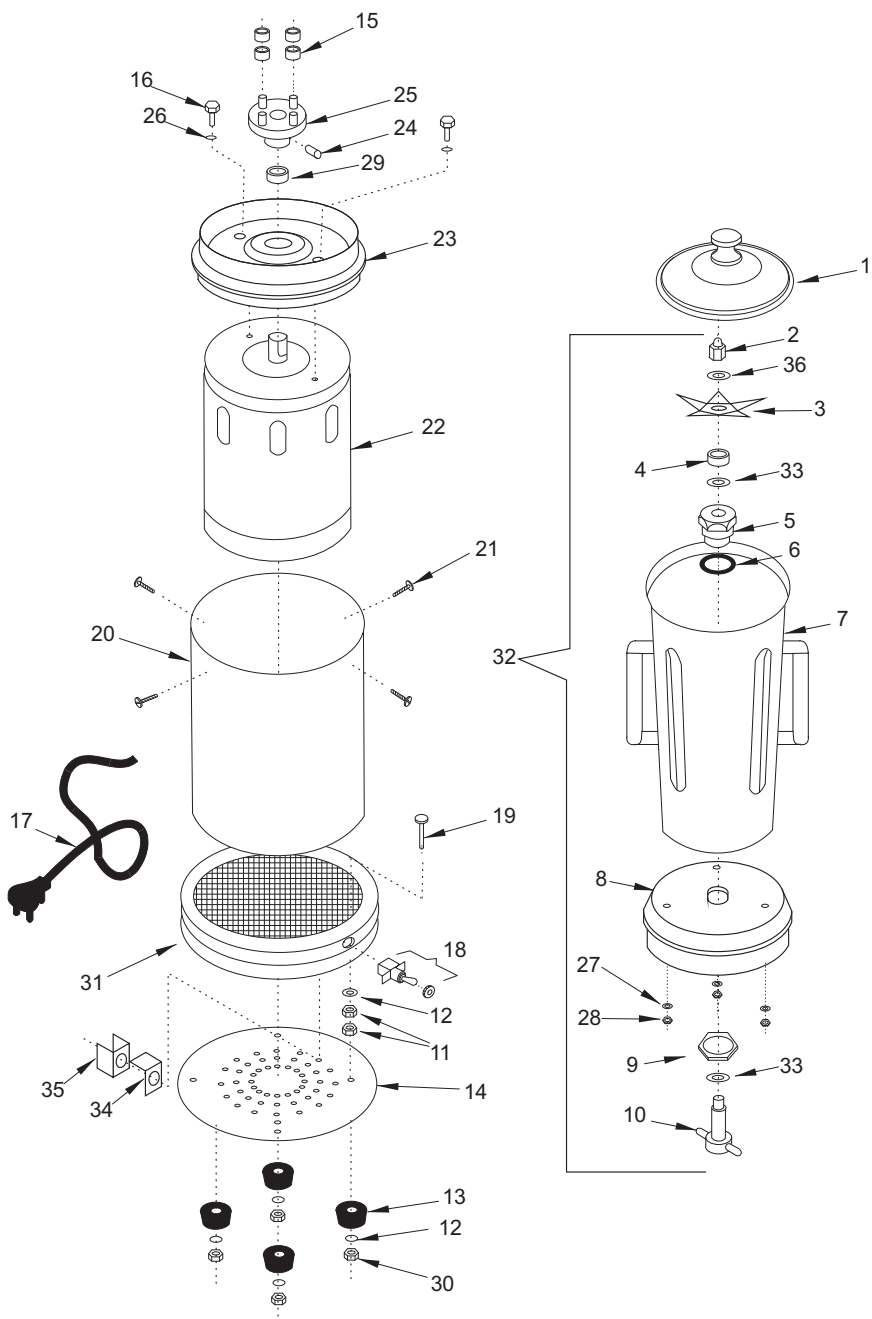
CROYDON

CROYDONMAQ INDUSTRIAL LTDA.

Estrada São Lourenço, 891 - Capivari
Duque de Caxias - RJ / Brasil - CEP 25243-150
Phone: 55 21 2777- 8100 / 55 21 2777-8106
e-mail: croydon@croydon.com.br

TI8SL-160001 W3

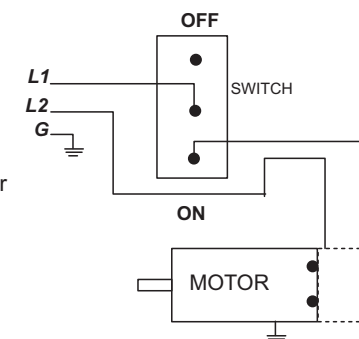
CROYDON INDUSTRIAL BLENDER 8 LITERS



CROYDON INDUSTRIAL BLENDER 8 LITERS

Item	code	description
1	37.016-3	Lid
2	37.033-3	Knife's Nut
3	37.570-3	Knife
4	37.063-3	Retainer
5	37.154-3	Bushings (Chuck)
6	37.062-3	Rubber Ring
7	37.115-3	Container (8L)
8	37.078-3	Container's Base
9	37.058-3	Chuck Nut
10	37.079-3	Shaft
11	604	Nut
12	643	Washer
13	2.088-3	Rubber Foot
14	4.010-3	Bottom Cover Plate
15	37.023-3	Polyurethane Ring
16	345	Screw
17	2.082-3	Cord Connection
18	270	Switch (on-off)
19	359	Screw
20	37.302-3	Body
21	552	Screw
22	37.311-3	60HZ Motor
23	37.303-3	Container's Support
24	575	Screw
25	37.044-3	Shaft Adapter
26	597	Washer
27	642	Washer
28	635	Nut
29	9.410-3	Retainer
30	606	Nut
31	4.044-3	Foot
32	37.578-3	Container Assembly
33	37.511-3	Underfriction Washer
34	4023-3	Switches' Fastener
35	4067-3	Switch's Protection
36	587	Washer (3/8")

Wiring Diagram



Technical Data

TI8SL-160001 W3	
Voltage (V)	110 (60Hz)
Power (HP)	1 / 2
Amperage (A)	8.8
Speed (rpm)	3465
Capacity (l)	8
Weight (kg/lbs)	11/24.2
Dimension WxHxD (cm/in)	26/10.3 x 75/29.6 x 21/8.3