

INSTRUCTION MANUAL

INDUSTRIAL BLENDER - TI15-160001-X0

* Please read these instructions carefully before operation this appliance.

IMPORTANT SAFEGUARDS

- When using electrical appliances, basic safety precautions should always be observed including the following:
- Before connecting your blender check if voltage of your power system corresponds to the same specified on the appliance.
- To protect against risk of electrical shock, do not put cord, plug, base or motor in water or other liquids.
- Never connect two or more appliances in the same plug.
- When not in use, unplug the blender.
- Avoid starting blender empty.
- Avoid contact with moving parts because blades are sharp. "Handle carefully".
- Keep hands and utensils out of container while blending to prevent the possibility of severe personal injury and or damage to blender. A plastic spatula may be used but must be used only when blender is "NOT RUNNING".
- Only remove the container when blender "COMPLETELY STOPPED".

INSTRUCTIONS FOR USE

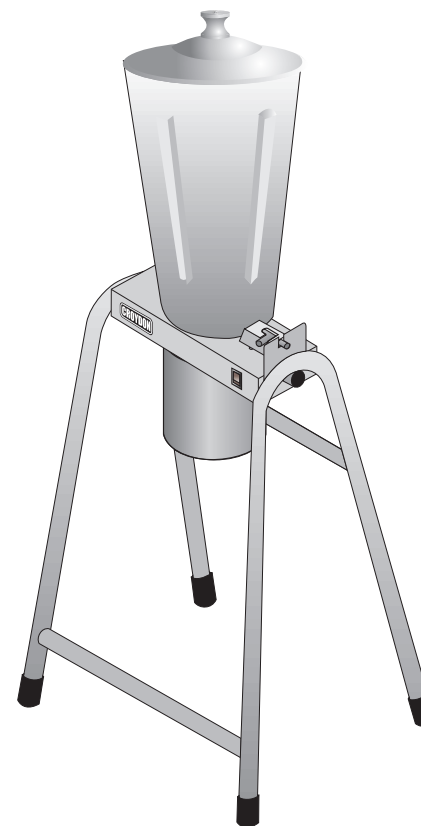
- Blender control is made by switch (ON - OFF).
- It's recommend to cut food in small pieces and maintain food below container's frieze height avoid spilling.
- Place a small quantity os food with blender off. Turn on blender and add the rest of food that you want to process.
- When blender is running do not remove the lid.
- If blender action stops, turn blender off. Remove lid and use a plastic spatula to push mixture toward blades. Replace lid and continue.

CLEANING PROCEDURE

- Clean container (cup) with liquid soap and water filling to half capacity.
- Turn on blender for some seconds.
- Turn off blender, empty the container and rinse it.
- Unplug blender clean body and external cup with a wet cloth.
- Do not use harsh detergent or chemical products for cleaning.
- Never use water jet or immerse appliance in water.
- Wipe off appliance with a dry cloth and wait at least half an hour before re-connecting to the main power outlet.
- If it's necessary to disassemble the knife and the bushing follow the instructions of the fig. 1.

The pictures/drawings are illustrations. All data can be changed without notification.

CROYDON



TI15

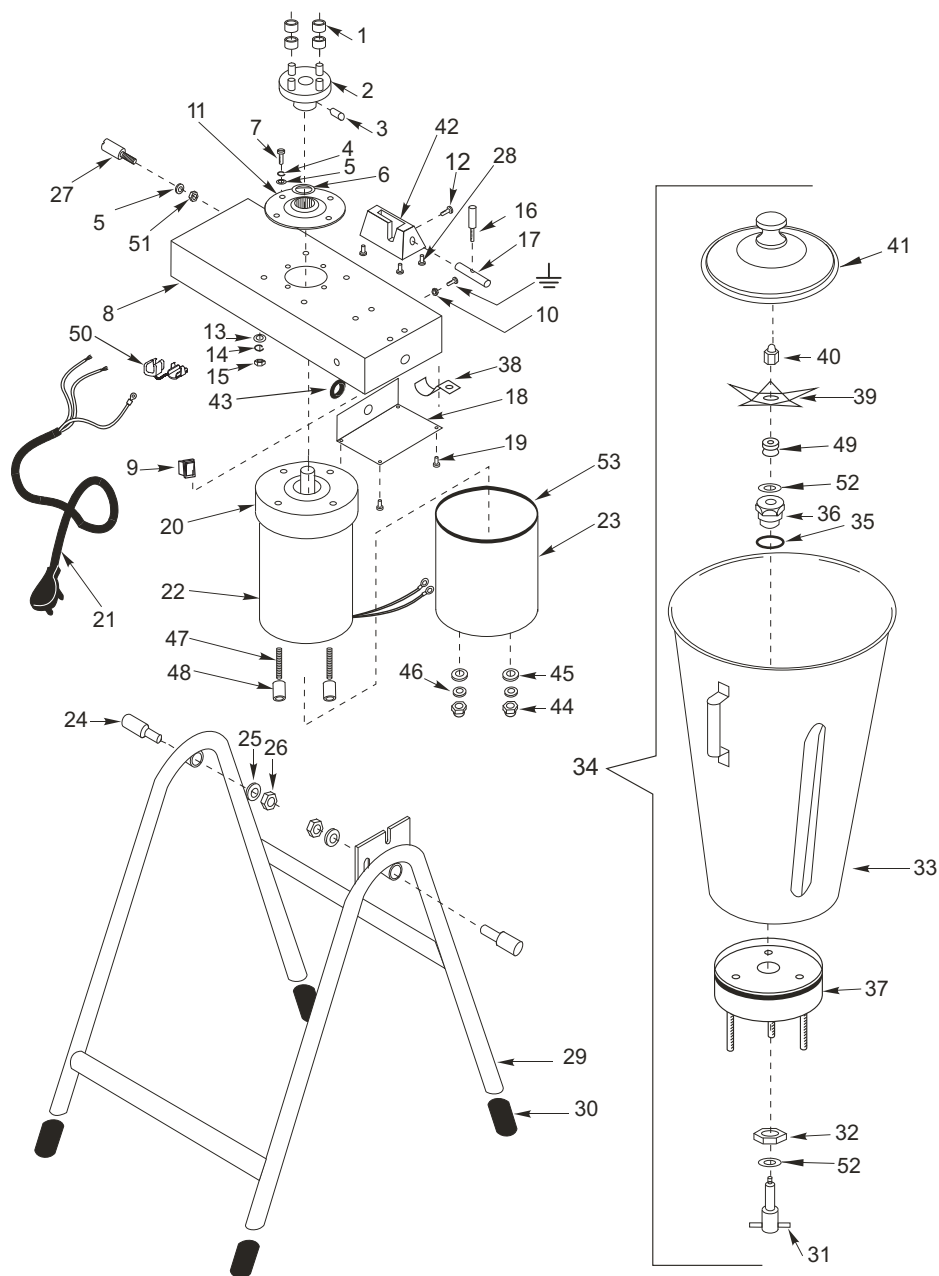
CROYDON

CROYDONMAQ INDUSTRIAL LTDA.
Estrada São Lourenço, 891 - Capivari
Duque de Caxias - RJ / Brasil - CEP 25243-150
Phone: 55 21 2777- 8100 / 55 21 2777-8106
e-mail: croydon@croydon.com.br

TI15-160001-X0

CROYDON

INDUSTRIAL BLENDER 15 LITERS (TI 15)



CROYDON

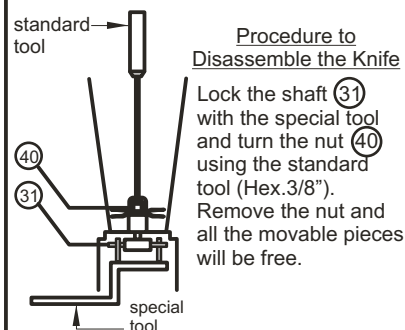
INDUSTRIAL BLENDER 15 LITERS (TI 15)

item	code	description
1	37.023-3	Polyurethane Ring
2	37.261-3	Shaft Adapter
3	534	Allen Screw 1/4"
4	598	Press Washer
5	641	Washer
6	9.410-3	Retainer
7	361	Screw 5/16"
8	37.229-3	Base
9	260	Switch (On/Off)
10	604	Nut 3/16"
11	37.232-3	Container's Support
12	385	Screw 3/16"
13	642	Washer
14	597	Press Washer
15	601	Nut 1/4"
16	37.919-3	Latch Pin
17	37.920-3	Latch Body
18	37.240-3	Switch Cover
19	552	Screw
20	37.211-3	Motor Top Cover
21	2.082-3	Cord Connection
22	37.226-3	Motor
23	37.231-3	Motor Cover
24	37.206-3	Special Screw
25	592	Press Washer
26	607	Nut 1/2"
27	37.235-3	Rabbit
28	332	Screw 1/4"
29	37.901-3	Blender Support
30	37.015-3	Foot
31	37.079-3	Shaft
32	37.058-3	Chuck Nut
33	37.258-3	Container
34	37.258-4	Container Assembly
35	37.062-3	O'ring
36	37.154-3	Bushing (Chuck)
37	37.256-3	Base
38	37.210-3	Bracket
39	37.570-3	Knife
40	37.033-3	Nut
41	37.019-3	Lid
42	37.234-3	Latch Support
43	2.007-3	Rubber Ring
44	623	Nut
45	643	Washer
46	594	Press Washer
47	37.241-3	Special Screw
48	37.239-3	Gap Base
49	37.063-3	Retainer
50	9.413-3	Cord Retainer
51	610	Nut 5/16"
52	37.511-3	Underfriction Washer
53	37.212-3	Finishing

FIG.1

Procedure to Disassemble the Container

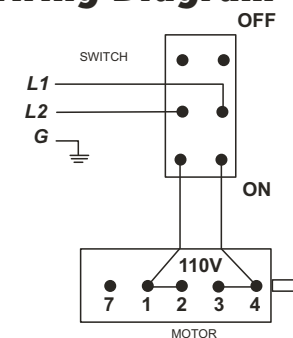
Unscrew and remove four nuts (15) located under the base (8).
Remove the pitcher.



Procedure to Disassemble the Bushing

Using the special tool, unscrew the bushing nut (32) and remove the bushing (36).
To reassemble proceed in inverse sequence.

Wiring Diagram



Technical Data

TI15-160001-X0	
Voltage (V)	110 (60 Hz)
Power (HP)	1 1/2
Amperage (A)	18.0
Speed (rpm)	3430
Capacity (l)	15
Weight (Kg/lbs)	24.0/52,8
Dimension WxHxD (cm/in)	46/18.2 x 119/46.9 x 57/22.5