

INSTRUCTION MANUAL

INDUSTRIAL BLENDER - TI15-260001 C3

* Please read these instructions carefully before operation this appliance.

IMPORTANT SAFEGUARDS

When using electrical appliances, basics safety precautions should always be observed including the following:

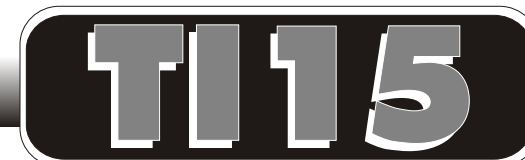
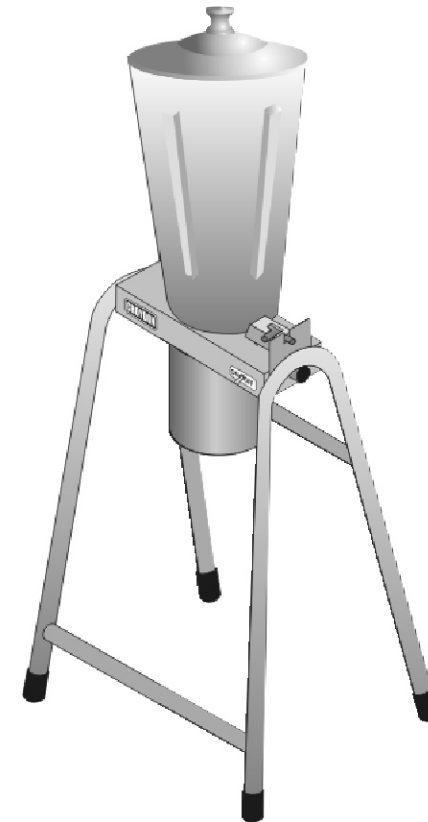
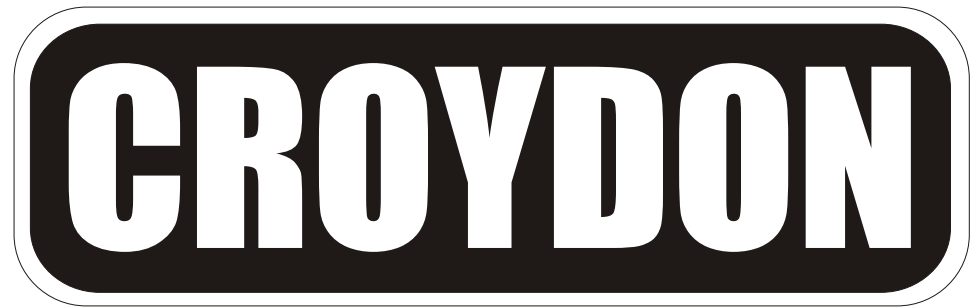
- Before connecting your blender check if voltage of your power system corresponds to the same specified on the appliance.
- To protect against risk of electrical shock, do not put cord, plug, base or motor in water or other liquids.
- Never connect two or more appliances in the same plug.
- When not in use, unplug the blender.
- Avoid starting blender empty.
- Avoid contact with moving parts because blades are sharp. "Handle carefully".
- Keep hands and utensils out of container while blending to prevent the Possibility of severe personal injury and or damage to blender. A plastic spatula may be used but must be used only when blender is "NOT RUNNING".
- Only remove the container when blender "COMPLETELY STOPPED".

INSTRUCTIONS FOR USE

- Blender control is made by switch (ON - OFF)
- It is recommended to cut food in small pieces and maintain food below frieze height to avoid spilling.
- To start blender, place small quantity of food before connecting it, and afterwards complete container placing food through service lid.
- When blender is running do not remove the lid.
- If blender action stops, turn blender off. Remove lid and use a plastic spatula to push mixture toward blades. Replace lid and continue.

CLEANING PROCEDURE

- Clean container (cup) with liquid soap and water filling to half capacity.
- Turn on blender for some seconds.
- Turn off blender, empty the container and rinse it.
- Unplug blender clean body and external cup with a wet cloth.
- Do not use harsh detergent or chemical products for cleaning.
- Never use water jet or immerse appliance in water.
- Wipe off appliance switch a dry doth and wait at least half an hour before re-connecting to the main power outlet.



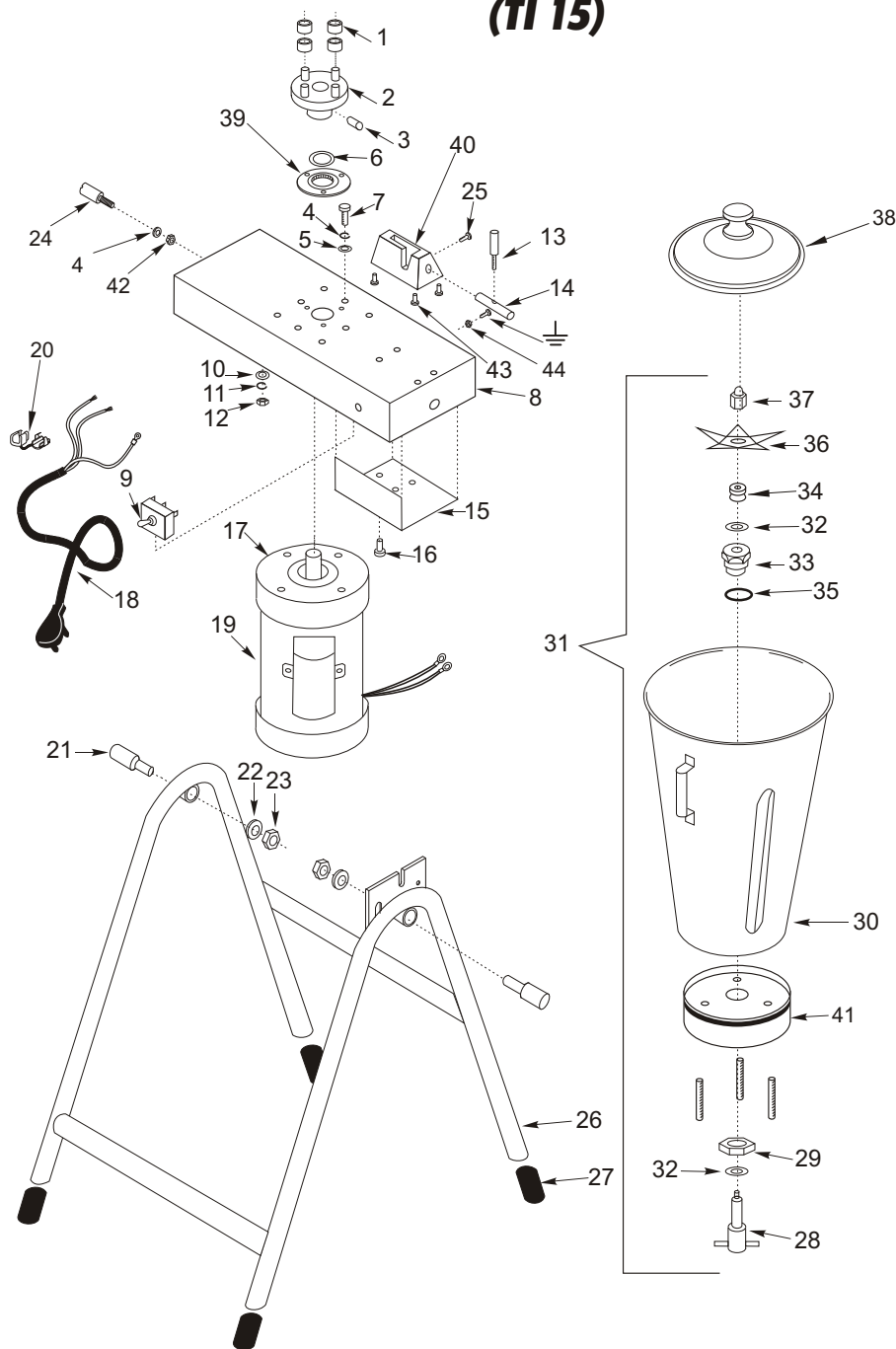
CROYDONMAQ INDUSTRIAL LTDA.

Estrada São Lourenço, 891 - Capivari - Duque de Caxias.
RJ - Brasil - CEP 25243-150 Fax: 55 21 2676-2522
Phone: 55 21 2776-1928 / 55 21 2676-1512
e-mail: croydon@croydon.com.br

TI15-260001 C3

CROYDON

INDUSTRIAL BLENDER 15 LITERS (TI 15)

**CROYDON**

INDUSTRIAL BLENDER 15 LITERS (TI 15)

item	code	description
1	37.023-3	Polyurethane ring
2	37.044-3	Shaft Adapter
3	534	Allen Screw 1/4"
4	598	Press Washer
5	641	Washer
6	9.410-3	Retainer
7	361	Screw 5/16"
8	37.229-3	Base
9	293	Switch (ON - OFF)
10	642	Washer
11	597	Press Washer
12	601	Nut 1/4"
13	37.919-3	Latch Din
14	37.920-3	Latch Body
15	37.233-3	Electrical Protector Lid
16	552	Screw 2,9
17	37.209-3	Motor Protector Plate
18	2.093-3	Cord Connection
19	37.284-3	Motor (1,5 HP)
20	9.413-3	Wiring connector
21	37.206-3	Special Screw
22	592	Press Washer
23	607	Nut 1/2"
24	37.235-3	Rabbet
25	385	Screw 3/16"
26	37.901-3	Blender Support
27	37.015-3	Foot
28	37.079-3	Shaft
29	37.058-3	Chuck Nut
30	37.258-3	Container
31	37.580-3	Container assembly
32	37.511-3	Underfriction Washer
33	37.083-3	Bushing (Chuck)
34	37.063-3	Retainer
35	37.062-3	O'ring
36	37.570-3	Knife
37	37.033-3	Nut
38	37.019-3	Lid
39	37.232-3	Container's Support
40	37.234-3	Latch Support
41	37.256-3	Base
42	610	Nut 5/16"
43	332	screw 1/4"
44	604	Nut 3/16"
45	574	Stud 1/4"

Technical Data

TI15-260001 C3	
Voltage (V)	220 (60Hz)
Power (HP)	1 ½
Amperage (A)	9.0
Speed (rpm)	3430
Capacity (l)	15
Weight (Kg/lbs)	26/57.2
Dimension W x H x D (cm/in)	46/101.2 x 119/261.8 x 59/129.8