

INSTRUCTION MANUAL

SANDWICH GRILL - MODEL: SASQ-10281-800

ATTENTION:

- PLEASE** read these instructions carefully before operating this appliance.
- The temperature is thermostatically controlled between the range of 50°C to 300°C (122°F to 572°F). A signal lamp adjacent to the thermostat indicates when the heating elements are energized.

IMPORTANT:

- These units are designed to operate on alternating current (A.C.) only.
- DO NOT CONNECT TO DIRECT CURRENT (D.C.).**
- Care should be taken when operating this appliance as **HOT SURFACES** may cause burns.
- Ensure that the power supply cord does not come into contact with hot surfaces.
- Do not leave unit in operation without an attendant.
- When not in use for long period unplug the appliance.

INSTALLATION AND OPERATION:

- Check if voltage of your power system corresponds to the same specified on the machine label.
- Before using the appliance for the first time, turn the control knob to 300°C (572°F), close the lid and allow the appliance to heat for + / - 30 minutes. You will notice smoke appearing due to the internal insulation burning, which is normal.
- After 30 minutes heating, turn temperature control down to operating desired temperature, keep knob in this position until pilot light turns off, at this point the unit will be ready to be used.
- To turn off the unit turn knob completely towards left.

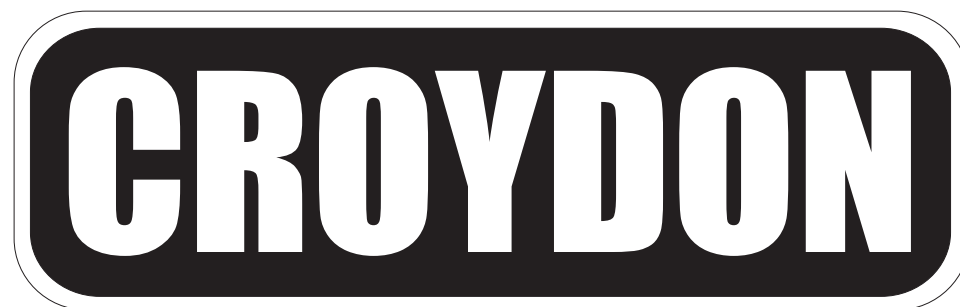
CLEANING PROCEDURE

- Always ensure that the appliance is disconnected from the main power supply before cleaning.
- After appliance has cooled clean cooking surface and body using only a damp cloth. Never use water jet or immerse appliance in water.
- Wipe off appliance with a dry cloth and wait at least half an hour before re-connecting to main power outlet.



CROYDONMAQ INDUSTRIAL LTDA.

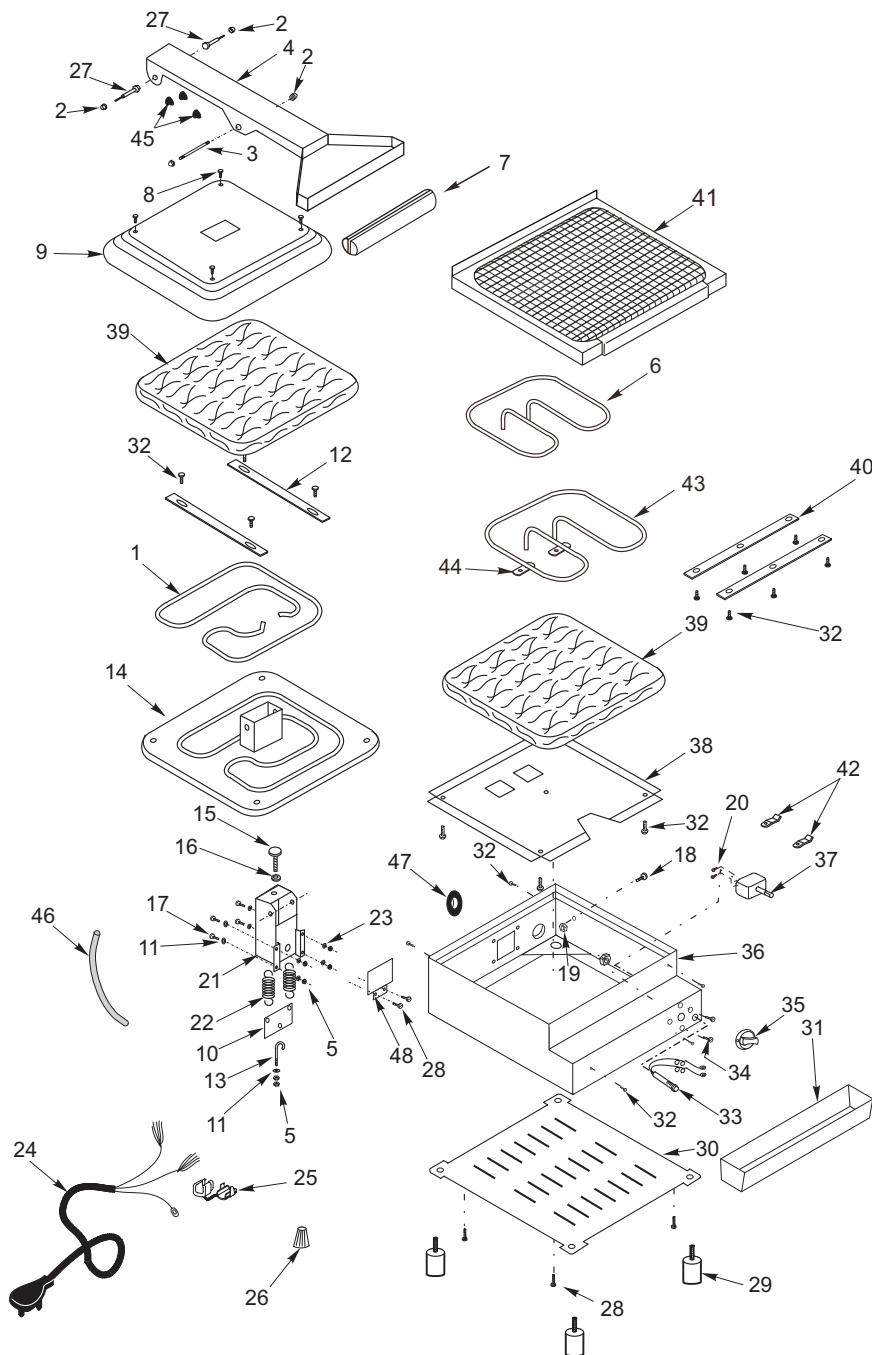
Estrada São Lourenço, 891 - Capivari
Duque de Caxias- RJ / Brasil - CEP 25243-150
Phone: 55 21 2777- 8100 / Fax: 55 21 2777- 8106
e-mail: croydon@croydon.com.br - www.croydon.com.br



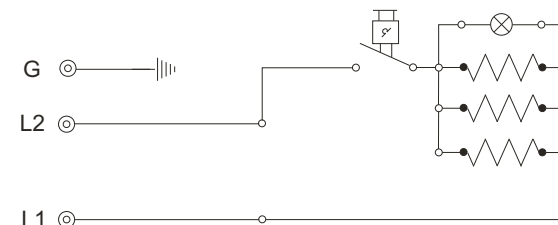
(STAINLESS STEEL ARM)

SASQ-10281-800

The pictures/drawings are illustrations. All data can be changed without notification.

CROYDON**SANDWICH GRILL (SASQ)****CROYDON****SANDWICH GRILL (SASQ)****Item****Code****Description**

1	2.034-3	Heating Element (550W)
2	621	Nut (1/4")
3	2.646-3	Shaft
4	1.971-3	Arm
5	601	Nut
6	2.019-3	Heating Element (450W)
7	15.000-3	Handle
8	481	Screw (3/16")
9	2.032-3	Lid
10	2.654-3	Spring Support
11	642	Washer 1/4"
12	1.964-3	Heating Fixed
13	2.631-3	Spring Regulator
14	2.478-3	Checkered Upper Heating Plate
15	2.467-3	Lid Regulator
16	2.466-3	Regulator Locker
17	332	Screw 1/4"
18	385	Screw 3/16"
19	604	Nut 3/16"
20	330	Special Screw
21	1.959-3	Arm Support
22	2.044-3	Spring
23	597	Locker Washer (1/4")
24	2.082-3	Cord Connection
25	9.413-3	Cord Retainer
26	2.085-3	Wire Connector
27	15.024-3	Shaft
28	552	Screw
29	1.917-3	Foot
30	1.963-3	Bottom Cover Plate
31	1.970-3	Grease Collector
32	566	Screw
33	2.013-3	Pilot Light
34	329	Screw
35	2.009-B	Knob
36	1.900-3	Body
37	2.009-3	Thermostat
38	2.057-3	Heating Element Protection Plate
39	2.073-3	Insulation
40	2.062-3	Heating Element Retainer
41	2.464-3	Checkered Lower Heating Plate
42	2.091-3	Thermostat Bulb Retainer
43	2.020-3	Heating Element (550W)
44	2.039-3	Heating Element Connection
45	2.113-3	Rubber Protection
46	2.105-3	Protection Sleeve
47	2.007-3	Rubber Protector
48	1.952-3	Plate Protector

Wiring Diagram**Technical Data**

SASQ-10281-800	
Voltage (V)	110
Power (W)	1.550
Amperage (A)	14,1
Weight (kg/lbs)	14,0/30,8
Dimensions W x H x D (cm/in)	33,7/13,3 x 36,3/14,3 x 49,5/19,5